

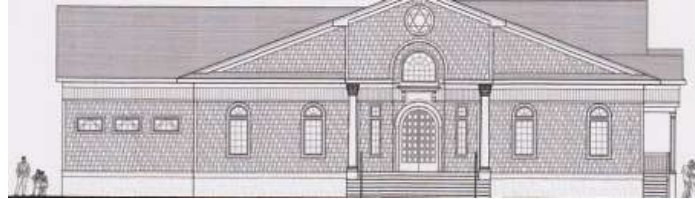


REBUILD UPDATE - "Build a sanctuary for me, and I will dwell amongst them." Exodus: 25:8; We are estimating a completion date in February.

CAPITAL CAMPAIGN UPDATE: It's Not Too Late!!
Be a part of the JCC of LBI Donor Recognition Wall—
Make a contribution you can be proud of!

Volume 5, Issue 2
SHEVAT 5772—
IYAR 5772
FEBRUARY 2012—
APRIL 2012

“Building the Future”



Come Grow With Us

We are making nice progress. The inside is near completion and looks great. Stop by and visit when you are in the area. Some of the major items that remain open are:

- ◆ The final grading of the parking lot
- ◆ An evaluation of the water drainage at the southwest corner of the parking lot. The engineers will conduct a study after the compacting of the stone is done.
- ◆ The outside railings

We have scheduled the final walk through for January 19th. After all open items on our punch list are addressed; the builder will go to the town for a certificate of occupancy.



It has been a long journey that was made possible because of the hard work and dedication of many individuals. I think everyone will be very proud to show this new beautiful Jewish Community Center to their friends and family. Happy and Healthy 2012 to everyone.

Jeff Shapiro, Rebuild Chairman

WORDS FROM THE RABBI

When Mordechai confronts Esther with the mission of going before King Ahasuerus to plead on behalf of the Jews, she answers that she has not been invited to appear before the king and to do so would mean death. Mordechai then reminds her that she too is a Jew and would not be safe even if she is the queen. He then says to her, “who knows? Maybe the reason you are in this position was for this moment?”

Esther realizes what she must do and sends a message to Mordechai that she would go before the King. She reasons that maybe this is why she was chosen to become the queen. Who Knows? The phrase “who knows” is powerful. It was powerful enough to have Esther think about her role in life. It's also a phrase that should give us pause to think



Inside this issue:

Words from the Rabbi	1, 2, 6
President's Report	3
Capital Campaign	4-5
Gala/Dedication Weekend	6
Religious School	13
Yahrzeits	14-15
Donations	16-17

Jewish Community Center
of Long Beach Island
2411 Long Beach Boulevard
Spray Beach, NJ 08008

Mailing Address:

PO Box 2205
Long Beach Township, NJ 08008

Phone: 609-492-4090

Fax: 609-492-7550

Office Hours:

Monday: 1:30 pm - 4:30 pm

Wednesday: 10:30 am - 1:30 pm

Thursday: 1:30 pm - 4:30 pm

Friday: 9 am - 1 pm

Website: <http://www.jccoflbi.org>

Email: jccoflbi@gmail.com

Jacob Friedman.....Rabbi

President.....Don Pripstein

Vice President.....Judy Smith

Treasurer.....George Katz

Secretary.....Lynn Berkowitz

Board of Trustees: Ed Dreyfus,

Harold Farin, Ben Gubar, Basil Karp,

Eileen Levin, Richard Morgan, Carole Nunberg,

Jeri Riffle, Ron Rosner, Toby Schwait,

Karen Schwing, Jeff Shapiro, Stuart Snyder,

Rose Valentine,

Sisterhood Representative: Vivian Fitts

Editor.....Karen Schwing

Office Managers.....Leslie Dinkfelt, Jeri Riffle

Computer Admin.....Marcie Deutsch

The JCC of LBI Office is
now located at:

117 N. Bay Ave, (2nd St)
Beach Haven

(former law office of
Julius Robinson)

Until February 2012

WORDS FROM THE RABBI



(Continued from page 1)

about our role as Jews and our relationship to our fellow Jews.

Here we are, living in the richest country in the world. Why are we seemingly so privileged to live here when so many of our fellow Jews live in fear and poverty in other parts of the world? Could it be that we have the means to help them in

times of trouble? Who knows?

We live in a country that believes in freedom, human rights and peace. Is it possible that our role here is to persuade our government to continue its strong support for Israel? Who knows?

Although many of us live well, many of our fellow Jews are living in poverty. Could it be that we who have the means have the responsibility to help them? Who knows?

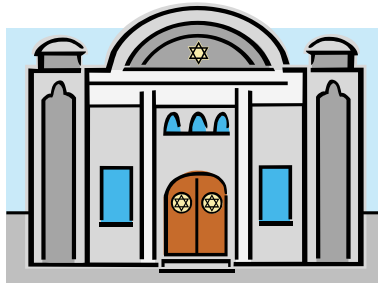
The message of Purim teaches us that just as Esther had to struggle with what was the right thing to do, and then realized the right thing to do, so each of us must deal with the issues of what is the right thing to do.

Just as Esther was willing to take a risk to do what was right, so we too may face difficulties in doing the right thing. We have to ask ourselves, is this what I am supposed to do? Who knows?

There are many organizations through which we can do the right thing. Some of them are: The Jewish Federation, Israel Bonds, Hadassah, B'nai B'rith, Jewish War Veterans, and many more.

Who knows but doing the right thing may be the best thing.

Rabbi Jack



Friday

February 17, 2012

at 7 PM

Join Us

for Shabbat Services

in our new JCC

Meet at the condo at 7 PM

for processional

PRESIDENT'S MESSAGE



Uncle Donny needs YOU

During calendar year 2011, twenty new member units joined the JCC. This took place during a period when we did not have the use of our building, and we were the wandering Jews of LBI. Our JCC is a family, and as a family we must know each other. We do this by socializing, praying, and working together. My message is directed to our new members, our long time members who have not participated very much in JCC activities, and of course to those of our family who have always been there to take charge of an activity or lend a helping hand.

Working together is one of the easiest and best ways to get to know each other. Our members, new and old, come from different walks of life, have different job or career histories, have participated in different volunteer activities, and have a variety of different areas of interest, experience, and knowledge. All of these are welcome at our JCC, and your input is needed and would be greatly appreciated.

The year 2012 in our new building will be an interesting and challenging one. It will also be difficult as we learn to deal with all aspects of the new facility, and we can use the help of everyone. Here is a PARTIAL LIST of some of our upcoming committees and activities with the names and phone numbers of the person in charge. In addition to this list, I am including other areas we must address in the coming year.

Everyone can be of help somewhere. Please call the contact person or the office and let us know your skills, interest and limitations. Getting involved and being a part of something is self rewarding, can give you a sense of accomplishment, and gives you the opportunity to work with and get to know your JCC family. So check this list, and anyplace where you can be of help, please call. As you can see, we also need legal, accounting, construction, insurance, and computer program advice. You don't have to limit yourself to only one activity. Most of our active members are involved in many of our programs.

Everyone
can be of
help
somewhere

- FUNDRAISING:** Eileen Levin (856) 465-3596
- RELIGIOUS:** Tiger Wolpert (609) 492-7538
- DEDICATION WEEKEND:** Eileen Levin (856) 465-3596
- SISTERHOOD:** Vivian Fitts (609) 492-9412
- BAZAARS:** Lynn Berkowitz (609) 709-3160
- MEMBERSHIP:** Toby Schwait (609) 709-3290
- RELIGIOUS SCHOOL:** Lynn Berkowitz (609) 709-3160
- FINANCIAL:** Jeff Shapiro (732) 580-7457
- CARING COMMITTEE:** Joy Kern (609) 978-3669
- ART FESTIVAL:** Jeff Shapiro (732) 580-7457

Evaluate our Cong. Insurance & put out for bid:

Review our Accounting procedures:

Make sure we are in compliance with all Legal aspects:

Provide Office help - mailings etc:

Develop additional Social, Educational, Entertainment and Cultural programming:

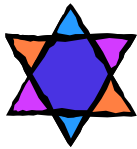
Review Computer Operations and our Computer programs:

Form House & Facilities Committee to take care of buildings and grounds:

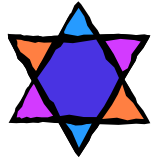
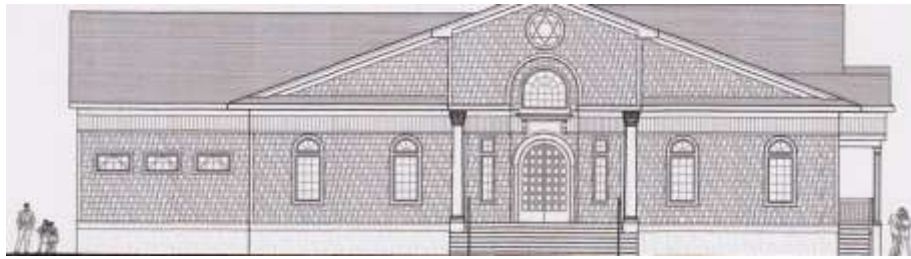
Please, offer your help by calling the contact person, the office, or me.

ENLIST NOW.....

Shalom, Don Pripstein



“Building the Future”



CAPITAL CAMPAIGN REPORT

I would like to extend my deepest appreciation to the 276 members and friends who have donated to the Capital Campaign to rebuild our synagogue. It is truly incredible that we have been able to raise \$1.5 million dollars to erect this beautiful house of worship on Long Beach Island.

I look forward to greeting all of you in the new building.

Rose Valentine
Capital Campaign Chair

HONOR ROLL: A LISTING OF MEMBERS AND FRIENDS WHO HAVE MADE PLEDGES AND GIFTS TO THE CAPITAL CAMPAIGN APPEAL

From October 16, 2011 – January 5, 2012

**Tributes, pavers and events designated to the Building Fund are not listed here.*

FOUNDER- \$25,000 – \$49,999

Anonymous
Joan & Abner Silver*

BENEFACTOR - \$10,000 – \$17,999

Eileen & Ellis Levin*

BUILDER - \$5,000 – \$9,999

Jackie & Paul Avondoglio*
Marsha & Mark Chazin
Lois & Brian Perkins

FRIEND – \$1,500 - \$4,999

Anonymous
Mona & Bernard Berman
Barbara & Arthur Cohen*
Ilene & Eric Estes
Judith Nelson Feldman*
Vivian & Marvin Fitts*
Dr. Julian D & Lisa D Freeman
Marjorie & Jeffrey Honickman
Phyllis & Basil Karp*
Reina & Phil Levy*
Dr. Alan Magaziner & Family
Nina & Jay Prenselaar*
Debbie & Peter Smith
Helen & Martin Tarlow*
Stacey Vreeland*

SUPPORTER - \$500 - \$1,499

Merson/Kline Family
Bonnie Perlman
Elaine, Justin & Lindsay Thomas

CONTRIBUTOR – UP TO \$499

Nancy & Harvey Harrison
Dale & Steven Hartman
Lewis & Rochelle Mandel
Ann Newman
Elayne & Robert Simandl
Cara & Leon Weissman

*Upgrade from previous category listed.

JCC OF LBI "Walk of Honor" Donor Form

Bricks are available in two sizes: 4" X 8" and 8" X 8"

Number of Bricks:

_____ 4" x 8" bricks @\$150.00 \$ _____

Maximum of 3 lines of 14 characters including punctuations and spaces.

_____ 8" x 8" bricks @ 350.00 \$ _____

Maximum of 4 lines of 14 characters including punctuations and spaces.

Total _____ \$ _____

Please complete the form for the brick or bricks, you wish to purchase (see additional forms on JCC website for engraving specifics). Also enclose this order form with your contribution made out to the JCC of LBI to:

JCC OF LBI

PO Box 2205, Long Beach Township, NJ 08008

You can also choose to make you payment online through the PayPal Program. See www.jccoflbi.org

For further information call 609-492-4090

The JCC of LBI is a 501(c) (3) organization. Brick orders are tax-deductible



WALK OF HONOR

Dear Congregant,

On behalf of the "Rebuild Committee", we would like to invite every member of the JCC of Long Beach Island to participate in the creation of our "Walk of Honor" which will be a beautiful part of the landscape of our new building.

We are well underway and moving toward completing the new building in the spring of 2012

The front entrance to the building, facing Long Beach Boulevard, will be prominently paved with donated commemorative bricks. Each brick will be engraved with the donor's name, family event, or memorial.

We are excited about our new, beautiful JCC building and sanctuary.

We hope you will support this program by purchasing one or more bricks by completing the form below. See the web site: www.jccoflbi.org to fill in the appropriate engraving specifics (see BRI CK PAVER on the top of the home page).

We hope all members will participate in the "Walk of Honor" in addition to your already generous donations to our Capital Campaign. Please send in your order soon.

Please return the order forms along with your check.

Once again, we appreciate your support for this program and look forward to many wonderful years at the Jewish Community Center of LBI .

Sincerely, Eileen Levin, Chair of the "Walk of Honor"

Please visit our website www.jccoflbi.org for the "Walk of Honor" brick paver forms

ASK THE RABBI?

QUESTION: *It has been noticed that at Shabbat morning services, some women put on a tallit to participate in the prayer, According to Jewish law what reason is given for women to wear a talit?.*

ANSWER: The commandment to wear a tallit with fringes is found in Numbers (15:37-41). Here God tells Moses to tell the Children of Israel to make fringes on the corners of their garments..... and these fringes (the people) will look upon them and remember all the commandments of God and observe them.

As a comment on this verse a teaching in the Talmud, (Menachot 43a) teaches that

women, too, are responsible for wearing the Talit. However Rabbi Simon says that they are exempt from the obligation based on the words "you will look upon them and remember them," indicates that the proper time for Talit and Tzitzit is for the daytime, not the night times. This ruling puts the commandment to wear tzitzit (fringes), into the special class of observances "limited by time (Shehazman gerama).

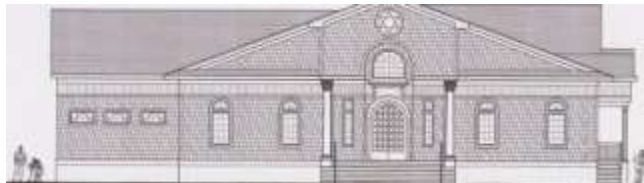
It is a general rule that women are not obligated to fulfill a positive commandment that are dependent upon time.

When the law is discussed in the Code of Jewish Law

(Orech Chayim 17.2) the author says, quoting Rabbi Simon, that women are exempt from putting on Tzitzit, since it is a commandments based upon time, but another commentator, Isserles adds: "at all events, if they wish to put on a fringed garment (Talit) and even recite a blessing over it, they are free to do so. However, he adds, if they do put it on, it would appear to be a show of extra pride.

The law is clear. The majority of authorities agree that a woman may wear a Talit if she so wishes. The appropriate age for a female to start wearing a Talit is at the time of the Bat Mitzvah.

SAVE the DATE...SAVE the DATE



GALA/DEDICATION WEEKEND

Jewish Community Center of LBI's
50th Anniversary Celebration & Dedication
of the New Building

Friday, June 22, 2012 Saturday, June 23, 2012 Sunday, June 24, 2012

Friday Evening – Shabbat Dinner and Services with a Guest Speaker

Saturday Morning – Shabbat Services and Oneg with a Guest Scholar

Sunday Evening – Beautiful Dinner/Dance and Celebration

Details and invitations will follow.

If you have any questions, call Eileen Levin (856)-465-3596 or Don Pripstein (609) 892-7441

WELCOME NEW MEMBERS

We are happy to announce the following new members and welcome them to our JCC family:

Barry Abelson
Henry & Darlene Gardner
Mel & Sybil Kleinfeld
Daniel & Lori Shomer
Barbara Lehman



MEMBERSHIP DIRECTORY ADDITIONS

BARRY ABELSON

841 Colony Court
 Bryn Mawr, PA 19010
 (267) 760-4337
barrymabelson@gmail.com

HENRY & DARLENE GARDNER

1304 S. Beach Ave.
 Beach Haven, NJ 08008
 (609) 207-6125
 CELL: (732) 439-1706
dgardner1304@comcast.net

MEL & SYBIL KLEINFELD

42 Butler Rd
 High Bar Harbor, NJ 08008
 (609) 494-7526
 CELL: (609) 713-2022
 152 Lombard St #102
 San Francisco, CA 94111
 (415) 398-5137
melsails@aol.com

DANIEL & LORI SHOMER

30 Carriage Way
 Barnegat, NJ 08005
 (609) 488-5839
 CELL: D= (732) 241-8902
 L= (410) 218-3500
Zippy1@comcast.net

BARBARA LEHMAN

6303 Long Beach Blvd.
 Harvey Cedars, NJ 08008
 (609) 494-8653
balehman@yahoo.com

FROM YOUR FUNDRAISING CHAIRMAN, EILEEN LEVIN

HOLD THE DATE: (We need volunteers to help with any of these events!!)

50th Anniversary Gala & Dedication Weekend

- Friday—Sunday: June 22nd, 23rd, and 24th 2012
- ◆ Friday Evening Shabbat Services & Shabbat Dinner- Special Guest Speaker
 - ◆ Saturday Morning Shabbat Service & Oneg
 - ◆ Sunday Evening— Dinner Dance

Keep checking the “Bulletin” & “Shabbat Reminder” for details as they become available

“Goods & Services Auction”

We are planning a “Goods & Services” Auction this Spring. We will auction off many items and services that our members and friends donate. We will bid on these items “online” and the winners will be announced at an event during the summer. Please be part of this “FUN” Fundraiser.

We need you to think about what talent, craft or service that you can do or offer. We have such a varied & talented congregation. I know you all have so much to offer. The list is endless!

Here are some “examples” of items for bid:

- * Art Classes
- * Accounting Services
- * Craft Items or Classes
- * Legal Services
- * Artwork
- * Tutoring
- * Timeshares or Condo rentals
- * Trips
- * Airline Miles
- * Sports Tickets
- * Many, more goods or services

Please contact Eileen Levin, Toby Schwait or Jackie Avondoglio for more information .

2012 PICTORIAL MEMBERSHIP DIRECTORY

Would you like to get the word out to your fellow members about your business? If so, please consider taking out an ad in our JCC of LBI 2012 pictorial membership directory. This directory will be used on a daily basis by our membership as well as serve as a beautiful commemorative book at the dedication of our new building in June 2012 when we also celebrate our 50th anniversary.

Prices for business ads, which may be in color at no extra charge, are as follows:

Full Page - \$130 (7" x 9¼")

Half Page - \$80

Quarter Page - \$50

Business Card Size - \$30 (8/page)

Individuals and families may also place an ad offering a congratulatory message in the directory. Prices for congratulatory messages are as noted above or you may opt for a short but sweet message for \$18 (20 messages/page).

To place your ad/congratulatory message, please contact Judy Smith at 609 618 4443 or jsmith337@comcast.net by February 24, 2012.

2012
Membership
Renewal
notices
were
mailed in
December

SUPPORT THE JCC of LBI

Our 2012 Membership Renewal notices were mailed in early December. Dues remain at \$400 for a family membership and \$200 for a single membership. An information sheet with your address and yearzeit information was included in this mailing. So that we have accurate information about our membership, please return the information sheets along with your check to the JCC as quickly as possible. You can also download the membership form from our web site: www.jccoflbi.org

We will have a section for advertisements and congratulatory messages in our Pictorial Membership Directory. If you are interested in participating, please contact Judy Smith.

Also, if you have not yet responded to our High Holiday Appeal, please do so and mark your check accordingly.

Dear Members:

There are times when I do not hear about a simcha or illness or a death in a JCC family for a few days or even weeks. In some cases, I hear second-hand, and although I am grateful for the notification, it would be appreciated if you would call me directly.

I can be reached at the following numbers:

Lakewood: 732-276-5519

LBI: 609-492-2000

Cell Phone: 732-610-8115

If I do not answer, leave a message on the answering machine and I will get back to you ASAP.

Rabbi Jack

WORDS FROM THE RABBI... PESACH

The holiday of Pesach is very special to our generation. This festival speaks to every aspect of our existence and provides us with insight and guidance for the problems we encounter. Consider the lessons of Pesach.

Pesach reminds us that it is the family that is the center of Jewish life. For most of us the first seder is celebrated not in the synagogue, but in the home. It is not a teacher who conveys our heritage to the children, but the parent. It is not the rabbi who teaches the values of the seder order, but the parent who answers the questions.

Pesach teaches us that children have often caused problems for the parents. The four children of the Haggadah include the rebellious child, as well as the wise one. To each of the children the parent must be available. The parent must relate to each child on his or her level, and convey to each child the teachings of Judaism.

Pesach teaches us never to give up hope. The times of darkness are followed by light, that even when we suffer, there is a purpose to it, even if we do not understand the reason.

Just as our ancestors went forth from bondage to freedom, so we too shall ultimately emerge from our troubles successfully.

The observance of Pesach requires the removal of *chametz*. Jewish law is strict demanding that even the smallest quantity of *chametz* renders the food as unfit for use. Why is a small amount of *chametz* considered unusable? It is because the law teaches us the importance of the little things in life, the details of human life.

We live in a world which praises BIGNESS. We see bigger stores, giant TV screens, taller buildings, bigger cars, larger houses. There is an emphasis on quantity instead of quality.

In our Jewish lives, the small observances are just as important as the big ones. Reciting a blessing before a meal, lighting a few candles for Shabbat and holidays, are small acts, but through which our Jewish values are experienced. Yet, these small observances are often ignored. Having Jewish books in the home, sending a child to Hebrew School, attending a Shabbat service may appear to be unexciting. Yet it is our observance of the little things that our allegiance to Judaism is reflected and the nature of our Jewish life is shaped.

A small amount of *chametz* may seem to be an insignificant thing, but real life is made up of small things.

So although you might consider conducting or attending a Seder as a major observance, attending synagogue services on Pesach which may seem unimportant, it is important to the entirety of the Pesach observance.

Ali and I wish all of you a happy Pesach.

Rabbi Jack

MI SHEBERACH LIST

Effective January 1st we have purged our old list and started a new one. If you have names that should be included, please contact the Office and give the English or Hebrew names.

CANDLE LIGHTING TIMES

February 3, 2012	4:27 PM
February 10, 2012	4:22 PM
February 17, 2012	4:17 PM
February 24, 2012	4:15 PM
March 3, 2012	4:14 PM
March 10, 2012	4:16 PM



March 17, 2012	4:19 PM
March 24, 2012	4:23 PM
March 31, 2012	4:29 PM
April 7, 2012	4:36 PM
April 14, 2012	4:44 PM
April 21, 2012	4:52 PM
April 28, 2012	

BOARD MEETING SUMMARY: Oct. 11, 2011

Attendees: Lynn Berkowitz, Ed Dreyfus, Harold Farin, Basil Karp, George Katz, Eileen Levin, Richard Morgan, Don Pripstein, Jeri Riffle, Karen Schwing, Jeff Shapiro, Judy Smith, and Rose Valentine

JCC Rebuild Committee

J. Shapiro reported that sheet rock and spackling are completed; painting should begin within the next week. The kitchen will come in a week from Monday, dropped ceilings are in the classrooms, some of the stained glass windows are ready to be installed, the base stone is down in the parking areas and the top stone is already there for spreading.

Due to a problem with the wiring of the burning bushes, they will be placed with a spotlight above and possibly be wired to an external outlet.

The stairs in the front of the building do not line up and have to be demolished and redone. This will likely slow things down.

Bannett anticipates the building will be ready for the Certificate of Occupancy by Nov. 1. However, J. Shapiro thinks a more realistic date is around Thanksgiving.

A total of at most \$500,000 will be drawn from our lenders.

H. Farin and his sub-committee continue to investigate the use of an electronic (LED) or manual sign for the exterior of the building. Several bids for signs have been received.

Rebuild Capital Campaign

R. Valentine reported that a grand total of \$1,279,837 has been raised including pledges, donations, money realized from the sale of the condo, raffles and pavers. After the High Holidays, as a result of inspirational speeches by both the Rabbi and the President, generous donations are coming in.

E. Levin reported that \$25,000 has been donated thus far for 118 pavers. Expenses at this point are \$1514.24 for engraving. There will be 10 complimentary pavers for organizations/people who have assisted us during the rebuild project.

Other Topics

A great effort was needed to prepare for the High Holiday services at St. Clare's Church. H. Farin expressed thanks to all who helped "schlep". Our occupancy of the church has been dismantled following the High Holiday services.

About 400 tickets were sold for the High Holidays. The High Holiday Raffle brought in \$7220 gross, which is about \$2000 less than last year. The net profit of approximately \$3500 will go to the building fund.

There was much discussion regarding how to show our appreciation to St. Francis Church for all they have done for us during the rebuild. The board would like to do something, in addition to the donation of over 60 bags of food to the food bank at St. Francis and the donation of a paver in their honor. Further discussion is needed.

The board approved the rehiring of Avi Green as cantor for High Holiday services in 2012.

Joy Kern has been assigned as chair of the CARING Committee, which has been established to assist families in need.

Henry Medvin resigned as Condo Representative as he is leaving LBI. A replacement is being sought.

E. Levin reported that she has obtained the services of a kosher caterer from Philadelphia for the June 24th Dedication and 50th Anniversary Gala. Ideas are being considered as to how to raise money for this event.

L. Berkowitz reported that the Stafford Board of Education has called a meeting to discuss security issues with using their buildings and the possibility of a fee for use. Someone from the JCC will attend this meeting on Oct. 19.

There are currently 225 paid members and 48 who have yet to pay their dues.

J. Smith reported that approximately 110 members had their picture taken for the 2012 membership directory. An effort is ongoing to get ads from businesses as well as congratulatory messages from members for inclusion in the directory.

3 dates and 2 definite topics have been selected for the Coffee & Conversations to be held in 2012.

J. Smith reported that mah jongg will continue at the library in Surf City on Wednesdays until our new building is available. A Chanukah celebration will hopefully be planned in the new building. Other expected Winter Programs include Shabbat dinners, Christmas Day volunteering at the hospital, breakfasts, a Seder and the Interfaith Service.

J. Smith attended a meeting of the Jewish Federation of Ocean County regarding security. A security policy is needed for the JCC and the religious school especially given our new building. Some quick steps can be taken including sharing blueprints of the new building with the local police and having a panic button attached to the security system. The office and religious school staff will need training once a policy is developed.

A report prepared by E. Dreyfus and his Events Committee will be discussed at the next board meeting.

Condolences To:



- ◆ Mimi Bloom and family on the death of her husband, Dr. Stanley Bloom
- ◆ The family of Roz Alpert
- ◆ Martha Schleifer on the loss of her mother, Klara Furman

BOARD MEETING SUMMARY: November 8, 2011

Attendees: Lynn Berkowitz, Ed Dreyfus, Vivian Fitts, Basil Karp, George Katz, Eileen Levin, Richard Morgan, Carole Nunberg, Don Pripstein, Jeri Riffle, Ron Rosner, Toby Schwait, Jeff Shapiro, Judy Smith, Stuart Snyder and Rose Valentine

JCC Rebuild Committee

J. Shapiro reported that painting of the building started today. The flooring was ordered and scheduled for installation. The kitchen installation is planned for 11/21. The stained glass windows are in. The lighting will be coming in next week.

J. Shapiro reported on a few open issues:

All sets of stairs do not conform to requirements and will be demolished and redone.

The parking lot has water buildup over a dry well. An additional drainage ditch is needed to correct this and direct the water to the street.

The handicap ramp may be too long and it was recommended that a lift be added. T. Schwait offered to donate a lift that may be able to be reconfigured for our use.

J. Shapiro reported that we expect to end the project December 31 when we will make payments to Bannett, the architect and others involved in the project. It is expected that we will be able to give a rebate back to some lenders next year.

D. Pripstein reported that an anonymous donor will be making a \$30,000 donation to cover the cost of permanent seating in the sanctuary and has requested information about the nonpermanent overflow seating.

H. Farin reported that work is in progress on the sound system and plans have been made for installation of 2 phone lines to complete the security system. The temporary exterior sign will be used until we are in the new building. He also noted that there will be a significant amount of work to move things from their current storage locations to the new building.

R. Morgan noted that the Health Department will need to see a floor plan of the kitchen as well as approve plans for food preparation.

Rebuild Capital Campaign

R. Valentine reported that a grand total of \$1,460,550 (an increase of \$180,713 since last month) has been raised including pledges, donations, money realized from the sale of the condo, raffles and pavers. This includes a donation of \$150,000 from an archangel that will be paid over 4 years. Sanctuary chairs were not in the rebuild budget. But if we add in the recent \$30,000 donation for these permanent seats, the total raised is \$1,490,550.

Another solicitation letter will go out in November.

Fran Lillienfeld's house has been sold so that her \$50,000 bequest is expected soon.

J. Shapiro applauded R. Valentine for reaching \$1,500,000 with only a \$1000 default.

E. Levin reported that we have received \$30,900 in donations for pavers with expenses for engraving of \$2,514.25.

Other Topics

An agreement with our archangel, regarding the terms of a donation to the building fund, was passed unanimously.

There was much discussion regarding the JCC Facilities Committee Report, which addresses terms regarding the rental and use of the JCC building. Changes will be incorporated into the report and reviewed at the next board meeting. C. Nunberg volunteered to be the scheduler of events and main contact for people interested in use of the building.

R. Valentine is working with the LBI Foundation of the Arts on the possibility of creating a partnership with the JCC of LBI to hold classes/events sponsored by the Foundation at the JCC.

The Board unanimously passed a motion to hold the 2012 Bazaars at the JCC. Although this may result in less income, this will give the JCC more visibility and exposure than if held at Bicentennial Park. L. Berkowitz reported that the parking lot was graded and measured for vendor spaces. The 2012 application has been approved and mailed to vendors.

C. Nunberg reported that 390 seats were sold for the High Holidays. The total amount collected for seats was \$31,050 and for the Book of Remembrance was \$5,371.

D. Pripstein reported that we have a signed contract with Avi Green for the 2012/5773 High Holidays.

D. Pripstein reported that the Shabbat Tidings will be discontinued for the winter.

R. Morgan volunteered to assume the Condo Coordinator duties from Henry Medvin.

Susan Sheehan and Joann Ramer volunteered to help Joy Kern with the Caring Committee.

V. Fitts suggested giving St. Francis a silver chalice in recognition of their generosity during our period of transition. She is researching this.

E. Levin reported on fund raising activities. Plans are to apply for a bingo permit next spring and the possibility of finding a partner (e.g. Surf City Fire Club) for this event is being considered. Members of the Goods & Services Auction are working to put this event together as an on-line auction. Planting trees may be a future fundraiser.

E. Levin reported that a commitment has been made to a Philadelphia Kosher caterer for the June 24th Dedication and 50th Anniversary Gala. Tiger Wolpert, R. Valentine and the Rabbi are working on plans for a Jewish and visiting scholar portion of the weekend.

There are currently 231 paid members, 3 honorary members and 43 unpaid members. Calls will be made to those who have not paid their dues.

J. Riffle will represent the JCC at the Lights for Life at Southern Ocean Medical Center.

J. Smith shared the schedule of winter programs and noted that 15 people attended a movie night held at R. Valentine's home.

J. Smith is continuing to approach businesses for ads in the 2012 membership directory.

JCC BOARD MEETING: DEC. 13, 2011

Attendees: Lynn Berkowitz, Ed Dreyfus, Harold Farin, Basil Karp, George Katz, Richard Morgan, Carole Nunberg, Don Pripstein, Jeri Riffle, Karen Schwing, Judy Smith, and Rose Valentine

JCC Rebuild Committee

Another walk-through will be held on 12/14. The final walk-through is planned for 12/28. The Certificate of Occupancy will follow the final walk-through. Inspections have been going on throughout the entire process so no surprises are anticipated.

The major open items are: 1. The steps – forms are in and expect concrete will be poured this week. 2. Cracks in the concrete are a concern. 3. Flooding in the southwest corner of the parking lot is probably our most serious problem. Engineers are evaluating to find a solution.

H. Farin reported that bumpers have been placed for parking spaces. The bimah doors have been ordered and have yet to be installed. The burning bushes will be installed with lighting to hang from above. The Yahrtzeit boards were installed today. The bathrooms and classrooms look lovely. The building has electricity and heating/air conditioning. The stained glass windows are all in. The kitchen work is almost completed. Carpeting has not been installed yet.

The decision as to how to orient and place the pavers will be left to the Paver Committee with input from Board members.

D. Pripstein noted that an additional \$10,000 has been added to the previous \$30,000 donation for permanent sanctuary chairs. This additional money is to be used for additional overflow seating or functions in the social hall.

Rebuild Capital Campaign

R. Valentine reported that a grand total of \$1,478,500 has been raised including pledges, donations, money realized from the sale of the condo, raffles and pavers. \$278,876 in pledges is still outstanding. In addition, we have \$40,000 donated for chairs. Money for the chairs was not included in the rebuild budget.

E. Levin reported that 149 pavers have been sold with an income of \$32,900. There is an additional expense of \$993.50 this month to complete the installation of the pavers.

R. Valentine is working on a donor recognition board and a wall of history that will be to the left and right of the main entrance as you walk through the door.

R. Valentine offered thanks to all those who helped her with the capital campaign and to Sherry Fruchterman who made the building so beautiful.

Other Topics

E. Levin reported that we are in the process of designing and ordering invitations for the Dedication/50th Anniversary Gala.

It was agreed that the JCC will purchase a 7-branch menorah as a gift to St. Francis. Father Steve expressed interest in having a 7-branch menorah as depicted in one of the stained glass windows at St. Francis. Sisterhood may also purchase a silver chalice as an additional gift. Bonnie Farin was volunteered to research the purchase of the menorah.

The revised Facilities Guideline report was reviewed. The board agreed to allow music of a Jewish content for a private party following the Kiddush. The board also agreed that photography would not be allowed in the synagogue on Shabbat and other Jewish Religious Holidays in the sanctuary and social hall. The board approved the revised document with the agreed upon changes.

The board approved a motion to allow H. Farin, K. Schwing and J. Smith to obtain office equipment including a color copier, a new telephone system and a new computer.

D. Pripstein and J. Smith met with Lt. Deely of the LB Township Police Dept. to discuss security at the new JCC building.

D. Pripstein reported that the Ocean County Federation is trying to establish a trip to Israel in August 2012. Plans for the trip will be announced in the Shabbat Reminder to see if there is interest from our members.

J. Smith reported that a Shabbat/Chanukah dinner celebration may be held at a local restaurant on 12/23. Plans are in place for volunteering at SOMC on Christmas Day followed by lunch and a movie.

J. Smith's recent focus is on finalizing ads for the 2012 membership directory rather than getting new ads.

Passover Service Schedule:

1st Day Pesach Service -

Saturday, April 7th - 9:30 AM

Community Seder - Saturday - April 7th -

6:00 PM; Reservations Required

2nd Day Pesach Service -

Sunday, April 8th - 9:30 AM

8th Eve of Pesach Service - Friday, April 13th - 7:30 PM

8th Day Pesach Service (Yizkor) - Saturday, April 14th - 9:30 AM



RELIGIOUS SCHOOL MUSINGS

The Religious School is moving a great children are In Jes-class the He-children are Hebrew. The ing a great deal while having



Religious along! We are year and the learning a lot! sica Schwing's brew 1 and 2 learning their kids are mak-progress, fun. Jessica is

doing a wonderful job teaching them their letters and how to read.

Samantha Eisenberg is doing a wonderful job teaching the children Music and Prayer. The children have mastered Lecha Dodi and V'shamru. They are currently working on Mizmor L'David and Shalom Alechem. Please join us for our next Family Service to see how well they are doing!

In Lynn Berkowitz's class the Hebrew 3 students are focused on one thing: B'nai Mitzvah. These students are making tremendous progress learning the blessings for their Bar/Bat Mitzvah. They are all diligently working on mastering their Haftorah.

In my class, the Hebrew 2 and 3 classes are continuing to work in the Explorers Bible. On a weekly basis we are reading stories from the Book of Prophets. The students continue to dazzle me when they relate the ethics and values each story addresses to their lives and modern day life. Our Hebrew 1 Students are learning basic Jewish Concepts in my class. They enjoy learning about topics such as Creation and Shabbat. We continue to learn the foundation of Jewish Living on a weekly basis.

Mrs. B's Confirmation class never ceases to amaze us! Mrs. B tells me that the student's thirst for knowledge is limitless. They continue to enjoy the company of fellow Jewish Teens as they learn about their heritage and customs.

Our students still have their eye on the prize: two beautiful new classrooms. The children are anxious to set roots in the new building. They are looking forward to all of the lessons and events that the New Building will host. As they say: are bags are packed!

Finally, keep your eye out for several things that the Religious School will be hosting in the new building. We will raising funds through the Labels for Education Program. A bin will be available for donations. The school is participating in the School Theater Tickets Program and we will have discount theater tickets available for our fellow congregants. Last but not least, we will be placing a Giving Tree in the new building. Pictures of "dream classrooms" drawn by our Religious School Students will be on display. This tree will afford congregants the opportunity to help the school purchase several of the items on the students' wish lists. Each leaf will delineate an item needed to help educate our youth. Items will include things such as learning materials, books, craft supplies and classroom fixtures. We will be asking congregants to pick a leaf containing the name of an item, whether small or large, and donate it to our school.

We are looking forward to moving into our New Home!

Please contribute to our religious school "Giving Tree"



RELIGIOUS SCHOOL FUND RAISER

The JCC of LBI Religious School is now participating in Labels for Education. Go to www.eLabelsAddUp.com and register. You can enter your Supercard numbers for Shop-Rite, Genardi's and Acme. Then select zip code 08008 and choose JCC of LBI Religious School for 100% of your points and we can earn money for our religious school when you purchase participating products. You can also clip Labels for Education and Box Tops and save them to turn in to the JCC Office for additional monies for our school.

YAHRZEIT OBSERVANCES

“It is customary to make a donation to the synagogue in memory of a loved one.”

SHEVAT

Read at Services Feb. 3, 2012

- 11 Robert Fischer
- 11 *Hannah Moses
- 12 Jacob Luterman
- 12 Thelma Brusilow
- 12 Harvey Light
- 13 Hyman Goldstein
- 13 Al Black
- 14 Dave Tarlow
- 14 *Barnet Bookman
- 14 *Benjamin Reiser
- 15 Lucy Life
- 15 Max Rosenbaum
- 15 Jacob Konner
- 16 Rabbi Pinchus Chazin
- 16 Estelle Stokes
- 17 Julius Marmon

Read at Services Feb. 10, 2012

- 18 *Rose Lyons Glickman
- 19 Jack Eisenberg
- 20 Anna Herman
- 20 William Silver
- 20 Mina Rosenbaum
- 21 *Anna Weill
- 21 Ethel Sharken
- 23 Daniel Glassman
- 24 Dr. Jack Lilienfeld



Read at Services Feb. 17, 2012

- 25 *Harold Koyner
- 25 Morris Miller
- 25 *Tee Gottlieb
- 26 Ruth Schwartz
- 26 George Patmus
- 27 *Bette Kender
- 28 Sigmund Donin
- 30 Sam Fine
- 30 Gene Klein
- 30 *Norman Gerber
- 30 Louise Paul

ADAR

- 1 *Gussie Herman
- 1 Louis Luterman

Read at Services Feb. 24, 2012

- 2 Jeffrey Weiner
- 2 Harry Dudkin
- 2 Esther Hirsch
- 2 Rachel Bendavid
- 2 Fay Schragger
- 3 Hilda Rosenberg
- 3 *Max Gottlieb
- 4 Rose Mendlow
- 4 *Lisa Kaufman
- 4 Joseph Schaffer
- 4 Harry Dudkin
- 4 Theodore J. Brod
- 5 *Moshe Neustadt
- 7 Ethel Dalinsky
- 8 Gloria Cohen
- 8 Solomon Schall
- 8 I sadore London
- 8 *Amanda Kanowitz
- 8 Barney Linderman



Read at Services Mar. 2, 2012

- 9 *Gerson Brasch
- 9 Morris Uniglicht
- 9 Florence Marmon
- 10 Sylvia Kaplan
- 11 Mae Lazar
- 12 I da Plotkin
- 12 Hannah Dudkin
- 12 Herman Reif
- 12 *Harry Kolsby
- 12 Bessie Schwaff
- 12 Stella Reif
- 12 *Anna Robin
- 13 Adel Linderman
- 13 Minnie Spielberg
- 14 Sidney Schlanger
- 14 *Solomon Meyerson
- 14 David Friedenberg
- 15 *Hannah Beck



Read at Services Mar. 9, 2012

- 16 Sam LiVecchi
- 16 Morris Weiner
- 16 Margot Lippman
- 17 Sarah Livshits
- 17 *Sarah Livshitz
- 17 Elizabeth Tittelbaum
- 17 Gerald Golden
- 17 Bella Garb
- 17 Chaya Cohen
- 18 Esther Renzin
- 18 Harry Sisenwine
- 20 Stanley Karp
- 20 Helen Applebaum
- 21 *Joseph Friedman
- 21 *Nathan Levison
- 22 Marian Diamond
- 22 Herman Kleinfeld
- 22 Paul Watling
- 22 *Abraham Pervin

Read at Services Mar. 16, 2012

- 23 Betty Schleifer
- 23 Milton Smith
- 23 *Lillian Salander
- 24 Samuel Kolb
- 24 Albert Kessler
- 25 Meir Cohen
- 25 Benjamin Katz
- 25 Eleanor Wichman Satir
- 26 *Marjorie Ann Fisher
- 26 Josephine Tucker
- 26 Abe Rosenbaum
- 27 Ginette Shomer
- 27 *Minnie Britz
- 27 Edna Eisner
- 27 Solomen Chalek
- 28 Hannah Dudkin
- 28 Sidney Kronenberg
- 28 Sylvia Glasser
- 29 Morris Herman
- 29 Felix Horowitz

*** Listed on the JCC of LBI Yahrzeit Memorial Board.**

YAH RZEIT OBSERVANCES

Read at Services Mar. 23, 2012

NI SAN

- 1 *Marvin Weinberger
- 1 Joseph Schlanger
- 1 Jacob Liebenberg
- 1 I sadore Opatosky
- 1 *Daniel Lang
- 3 *Michael Beck
- 3 *I rving List
- 3 Louis Cohen
- 4 Fannie Shapiro
- 4 Charles Miller
- 4 Ruth Weisberger
- 5 Dora Weinstein
- 5 *Martin Hartman
- 5 *Lawrence Alpert
- 5 Martin Hartman
- 5 Jeanette Rosen
- 5 *Minnie Einhorn I -17
- 5 Charlotte Chazin
- 6 Mary Halpern
- 6 I rving Maginsky
- 7 I rving Klein
- 7 Lena Hirschman
- 7 Rita Haas
- 7 *Shirley Feather
- 7 Benjamin Epstein
- 7 *Saul Silverman

Read at Services Mar. 30, 2012

- 8 Henry Kelsen
- 8 *Charles Kasselmann
- 8 *Benjamin Fruchtman
- 8 Bernard Mihtz
- 9 Charlotte Dzuna
- 9 *Cora Korb
- 9 Harry Kaplan
- 10 *Helen Klein
- 10 *I rving Sampson
- 10 *William Poster
- 11 Ed Davis
- 11 Milton Kamler
- 11 Cecil Weiner
- 13 Jerome Shapiro
- 13 Deborah Gottlieb
- 14 *Oscar Glickman
- 14 *Julius Snyder



Read at Services Apr. 6, 2012

- 15 *Bernard Gubar
- 15 *I rv Koseff
- 15 Alfred Levin
- 16 Felix Schoenberger
- 16 Fanny Fuhrmann
- 16 Joseph Indzel
- 16 *George Gubar
- 17 Laura Kaplan
- 17 *I rving Bzezensky
- 17 Harold Katz
- 18 Malvina Malmed
- 18 Claire Levin
- 18 Louis Rubinfeld
- 18 Pearl Corson
- 18 Rose Gottlieb
- 19 *Harry Millstein
- 19 *Edward Albert
- 19 *Robert Bzezensky
- 20 Pearl Weinzimmer
- 21 *Jacob Britz
- 21 *Kathryn Hadley
- 21 David Rosenbloom

Read at Services Apr. 13, 2012

- 22 Fanny Dickman
 - 22 *Samuel Troum
 - 23 I rving Kern
 - 23 *Richard Saivetz
 - 23 *Joseph Callet
 - 23 Fannie Silverman
 - 23 Anita McMillan
 - 24 Geraldine I sanuk
 - 25 *Marian Selsky
 - 25 Ben Weisberger
 - 26 Raleigh Liebenberg
 - 27 Raphael Haber
 - 27 Dora Haber
 - 27 David Weinstein
 - 28 Morris H. Ross
 - 28 *Calvert I. Waranch
 - 28 *Mae Hirschorn
- Cohen

Read at Services Apr. 20, 2012

- 29 Izzy Ungar
- 29 George Foosaner
- 29 Ruth Goldman
- 29 Matilda Tubis
- 30 Evelyn Miller
- 30 Jennie Shapiro
- 30 Evelyn Miller

I YAR

- 1 Ann Hirsh Meonikoff
- 1 William Frank
- 2 Aaron A. Powitz
- 2 *Anna Blumenthal
- 3 George Rosner
- 3 Fanny Kelsen
- 3 Phil Pepperman
- 3 Lazar Lebovitz
- 4 Jack Halpern
- 4 Nathan Bard
- 4 Batia Shatz
- 5 Harold Kugel
- 5 Ann Bernstein
- 5 Leon Schachter



Read at Services Apr. 27, 2012

- 6 Ben Levenstein
- 6 *Nathan Rubenstein
- 6 Al Baker
- 7 Abraham Mizrahi
- 8 Harry Papier
- 8 *Gussie Treiber
- 9 *Nellie Callet
- 9 *Anna Gerber
- 10 Hyla Lipsky
- 10 Ruth Lipshultz
- 10 Stephanie Schwait
- 11 Edward Jackson
- 11 *Betty Gorelick

“May the souls of the dearly departed be bound up in the bonds of eternal life.”

THANK YOU FOR YOUR GENEROUS DONATIONS

IN MEMORY OF

- ◆ Dr. Stanley Bloom by Judy Smith & Howard Tomar, Dr. Mortimer & Marcia Nelson, Nona L. Abrams, Vivian and Marvin Fitts
- ◆ Rose Britz, Milton Britz, Jacob Britz, Arlene Britz, Rhea Britz by Jay Britz
- ◆ Ellen Rosen Field by Beth Seavey
- ◆ Joseph Hirschman by Murry Opatosky
- ◆ Michael Jaffe by Dr. Mortimer & Marcia Nelson
- ◆ Dora Kaplan and Rose Kincus by Dr. Al & Mickie Kaplan
- ◆ Shirley Morgan by Richard Morgan
- ◆ Lawrence Pollack by Dr. Mortimer & Marcia Nelson
- ◆ Shirley Rogers by Zee-jay Greenspan
- ◆ Irene Schiff by Karen Shatz
- ◆ Pauline Sherman by Roslyn Alpert
- ◆ Ruth Shrager by Jim Shrager
- ◆ Anna Stuhl by Lynn Reimer
- ◆ Paul Tanenbaum by Lynn Levitt
- ◆ Casper Ungar by Rose Starr
- ◆ Irving Weissler by Elizabeth Stone
- ◆ Arthur Wichman by Annette Kaplan
- ◆ Roslyn Alpert by Millie & Tiger Wolpert; Rose Starr; and Mort & Marcia Nelson
- ◆ Ephraim Baker by Karen Schwing
- ◆ Steven D. Baron by Bonnie Shrager
- ◆ Vera Beebe by Rose Starr
- ◆ Bertrand Berman by Stanley Berman
- ◆ Dr. Seymour Cohen by Janet & Howard Cohen
- ◆ Lydia Davis by Michael Davis
- ◆ Alfred & Gladys Krechovitz by Marsha Chazin
- ◆ Alex Hirsch by Myron Hirsch
- ◆ Abraham Lazar by Eileen Buznitsky
- ◆ Ruth Olinsky by Rose Starr
- ◆ Sandra Opatosky by Murry Opatosky
- ◆ Lillian W. Pacharz by Rose Valentine
- ◆ Irene Pepis by Anne Lewis
- ◆ Abram P. Piwosky by Nona Levin Abrams
- ◆ David Plotkin by Elyse Pepose
- ◆ Claire Seavey by Steven Seavey
- ◆ Max Silver by Millie Wolpert
- ◆ "George" by Millie & Tiger Wolpert
- ◆ Evelyn Smith by Judy Smith
- ◆ Martha Schleifer's Mother by Rose Starr
- ◆ Rachel Cherins by Robert Cherins
- ◆ Eleanor Cohen & Barbara Carey by Mark & Shaun Cohen
- ◆ Robert Eisner by Averell Eisner
- ◆ Edna Katz by George Katz
- ◆ Charles Farin, Doris Farin & Ray Farin by Harold Farin
- ◆ Ruth Fisher by Scott & Barbara Goldstein
- ◆ Naomi Fisher by Milton & Inge Batoff
- ◆ Charlotte Frank by Dr. Howard Frank
- ◆ Herman Glassman by Iris Glassman
- ◆ Rachel List by Lorraine Barron
- ◆ Lessie Markowitz and Samuel Tucker by Diane Tucker
- ◆ Irene Pepis by Phil & Anne Lewis
- ◆ Dan Renzin by Wynne Davis
- ◆ Rose Rosenbaum by Mildred Grossman
- ◆ Philip Schleifer by Charles Schliefer
- ◆ Nathan Shapiro by Jeff Shapiro
- ◆ Sheldon Siegel by Barbara & Scott Goldstein
- ◆ Lilyan Strassman by Selma Troum
- ◆ Abraham Weissler by Elizabeth Stone
- ◆ Helene Uhland by Ben and Jeri Riffle
- ◆ Frances Knie by Debra and Alan Traster
- ◆ Henrietta Schocat by Jackie and Paul Avondoglio
- ◆ Phyllis Tanenbaum by Lynn Levitt
- ◆ Stella Pervin by Dorothy King
- ◆ Reba Papier by Charles and Judith Papier
- ◆ Morris Balbresky by Charles and Judith Papier

May the memory of your dearly departed be a source of comfort and blessing.

THANK YOU FOR YOUR GENEROUS DONATIONS

Your
generous
donations
help keep
our JCC
running all
year long

- ◆ Joseph Martin by Shelly Weisfeld
- ◆ Herb Morton by Joanne Levine
- ◆ Naomi Antonoff by Stanley Antonoff
- ◆ Michael Kaplan by Annette Kaplan
- ◆ Mark Goldman by Gloria Canter
- ◆ Becky Reiff by Iris Glassman
- ◆ Mildred Epstein by Joseph Epstein
- ◆ Dr. Henry Abrams by Nona Levin Abrams
- ◆ Betty Berger by Sherry Fruchterman
- ◆ Helen Berman by Stanley Berman
- ◆ Gertrude Fitts & Freida J. Klein by Marvin & Vivian Fitts
- ◆ Rose Gerstenblatt by Bernard Gerstenblatt
- ◆ Hyman & Jeanne Goldstein by Phyllis Sisenwine
- ◆ Sidney Gottlieb by Rhoda Herman
- ◆ Sal Grossman by Mildred Grossman
- ◆ Mary Esther Sprague Ruoff, Wallace Charles Ruoff and Julius Robinson by Rosemary Ruoff
- ◆ Jacob Weill by Ben Gubar
- ◆ Walter and Joyce Blumberg by Lori Shomer

TRIBUTES

- ◆ In honor of Millie & Tiger Wolpert's wedding anniversary by Judy Smith & Howard Tomar
- ◆ In honor of the birth of Giancarlo & Thomas by their great grandparents, Vivian & Marvin Fitts
- ◆ In honor of the birth of Vivian & Marvin Fitts' new grandson, Thomas, by Marilyn Alexander
- ◆ In honor of the birth of Vivian & Marvin Fitts' 2 new grandsons, Giancarlo & Thomas, by Millie & Tiger Wolpert, Judy Smith & Howard Tomar, and Nita & Jeff Shapiro and Joanne Levine
- ◆ Happy Birthday to Rosie Starr by Dr. Paul & Jackie Avondoglio

- ◆ Rose Starr's Birthday by Judy Smith & Howard Tomar and Vivian & Marvin Fitts
- ◆ Get Well Wishes to Janet Babbitt & Jane Miller by Phil & Anne Lewis
- ◆ Congratulations to Sue Rubinfeld on the birth of her new grandson, by Marilyn Alexander and Toby Schwait
- ◆ Congratulations to Jeff and Nita Shapiro, on the birth of their new grandchild, by Toby Schwait

GENERAL FUND

- ◆ Robert & Patricia Prail & Robert Schey

PRAYER BOOK

- ◆ In memory of Abe Josephson by Jeri Riffle
- ◆ In Memory of Evelyn B. Sholin by Marilyn Alexander

RABBI'S FUND

- ◆ Phil and Anne Lewis



- ◆ Matthew Moran, son of Susan Sheehan, who left for Air Force boot camp in December
- ◆ Elyse and Stuart Pepose on the birth of granddaughter, Rayna Abigail
- ◆ Vivan and Marvin Fitts on the birth of new great-grandson, Thomas
- ◆ Lynn Berkowitz on the bar mitzvah of her grandson, Jeremy Berkowitz
- ◆ Howie Brecher on his election to the LBI Business Alliance Board
- ◆ Nita and Jeff Shapiro on the birth of the new grandson, Leo Trevor Tuzzeo
- ◆ Joe and Barbara Epstein on the birth of granddaughter Iris Annabelle Duggan

RENTAL AND USE OF JCC FACILITIES

The Board of Trustees has approved a program and guidelines for the rental and use of our new facilities by members or non-members. Among its provisions are:

Only Kosher food and certified kosher caterers can be used.

No photography will be allowed at any time during Shabbat or other Jewish Religious Holidays.

During these days and only during that portion of the reception that is a private party, live or canned music, only of a Jewish spiritual content, will be allowed.

Carole Nunberg has volunteered to be the JCC contact person to arrange for the use and rental of our facilities, and to enter into such contracts on behalf of our congregation. She can be reached by e-mail at carolebn1@aol.com or at (856) 985-9969, or cell@ (609) 410-7649.

FRI DAY EVENING SERVICES

Services will be held at 7:30 pm at St. Thomas of Villanova Catholic Church in Surf City until we are in our new building. Use the parking lot on north side of church (14th St), and enter that north door.

During some weeks we have not had a minyan at our Friday evening services. If we are to be considered a "full-service" congregation, we must provide the opportunity for our members to say kaddish for yahrzeits being observed during the following week. I am asking our members who remain in the area during the winter months to commit to at least one, and hopefully two, Friday eve services each month. In view of the many hours of volunteer service many of our members do for the JCC, it is not too much to ask you to commit about 2 hours a month for this mitzvah. Consider it your obligated 'Jewry Duty'.

We need you for 'Jewry Duty'. Volunteer to be a Minyanaire. It's a mitzvah.

The first official Shabbat service in the new synagogue will take place on **February 17, 2012. We will meet at 7:00 PM at the Condo** with the procession of Torahs from the Condo to the Sanctuary. On the way, a shofar will be sounded three times to herald the arrival of the Torahs. The front doors will be opened to permit the Torahs to be brought in. Proper songs will accompany the procession.

Congregants will participate with special readings. The traditional Shabbat eve service will be held once the Torahs have been placed into the Ark. Rabbi Jack, who returns from his vacation will conduct the services and deliver the sermon "Looking To The Future." Other members will participate. All members who are in the area from Aberdeen to Atlantic City, from the shore to the far boundary of Philadelphia are urged to attend this special and meaningful service.

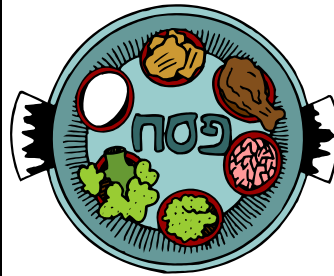
SHORE PROPERTY CONCIERGE (SPC, Inc.)

We are specialists in maintenance, repairs and "handyman services" for home owners as well as year round upkeep.

Every service and job 200% Guaranteed in writing!

In addition, we will donate 20% of the total service or job (excluding supplies) back to the JCC Rebuild Capital Campaign.

Winter is here and spring is around the corner; call us today to get ALL your projects done, so you can relax and have fun!



Skipper Dipper™

★ ★ ★ ★ ★ ★

9305 Long Beach Blvd
Peahala Park, NJ
(609) 492-9680

*LBJ's Favorite
Ice Cream Since 1978!*



Earth-friendly gift bags for every occasion

- BAR MITZVAH
- BAT MITZVAH
- HANNUKAH
- PURIM



Tikkun Olam™
love ▲ awareness ▼ charity

- WELLNESS
- SHABBAT
- ECO-STUDENT
- PASSOVER

eco-friendly
tree free
fair trade.

unique
handmade
gifts

visit www.tikkunolam-lac.com or call 201-847-1962

Office•609•494•2560 x: 19
Fax•609•494•1041

Cell: 856•465•3596
E-Mail: elevin505@verizon.net

AGER REALTY

LONG BEACH BOULEVARD AT 34TH STREET
BRANT BEACH, NEW JERSEY 08008

EILEEN LEVIN
SALES ASSOCIATE



LONG BEACH ISLAND SALES & RENTALS

Diane Turton,
REALTORS

JEFFREY SHAPIRO

Broker/Sales Associate

Bus: 609-492-7000 x23 Fax: 609-492-2708

Eve: 609-494-4525 Cell: 732-580-7457

E-mail: jshapiro@dianeturton.com

Website: www.dianeturton.com

217 N. Bay Avenue, Beach Haven, NJ 08008

RESORTWEAR  SPORTSWEAR
COCONUTS

**SCHOONER'S
WHARF**

325 Ninth St.
Beach Haven, NJ
609-492-3711

**CORNER OF
17TH & BLVD.**

1702 Long Beach Blvd.
Ship Bottom, NJ
609-494-4608

Open Daily

**DELI KING
CLARK**

30 Clarkton Drive
Clark, NJ

**732-574-2040 or
1-800-410-DELI**



*Under Kosher Supervision of "When You Need Us"
Rabbi Isaiah Hertzberg*



Aaron Tepper
Licensed Real Estate Agent



MARY ALLEN REALTY INC

2909 Long Beach Boulevard
Ship Bottom, New Jersey 08008

Toll Free 800.524.4786 x 211

Office 609.494.0700 x 211

Cell 609.206.5475

Email ATEpper@MaryAllen.com

Website <http://www.AtHomeLBI.com>

Each office is independently owned and operated



Philip E. Altland
Senior Vice President
Fine Homes Specialist



Prudential

Douglas Elliman Real Estate

25 W. 17th Street, New York, NY 10011

Dir Ln 212 727-8105 Fax 646 487-8766

paltland@elliman.com

www.philipaltland.com

An independently owned and operated member of Prudential Real Estate Affiliates, Inc.



tropics  **tropics too**

Plus Size Boutique

fresh, fun clothes

Open Daily 10 AM

www.shopcoconuts.com

325 Ninth Street, Beach Haven • 609-492-4655

11100 Long Beach Blvd., Long Beach • 909-492-5882

Jewish Community Center of Long Beach Island

2411 Long Beach Boulevard
Spray Beach, NJ -08008
(PO Box 2205 Long Beach Township, NJ 08008)

Phone: 609-492-4090
Fax: 609-492-7550
E-mail: jccoflbi@gmail.com



JCC of LBI

DATES TO REMEMBER:

- ◆ Mah-jongg continues Wednesday afternoons 12:30—4 PM at the Surf City Library
- ◆ Sunday, January 22, 2012—Mah-jongg 10 AM **at Karen's house; contact Karen Schwing**
- ◆ Wednesday, January 25, 2012: Theatre Trip to NYC w/lunch or dinner
- ◆ Friday, January 27, 2012: Shabbat Dinner at a restaurant TBD followed by Services
- ◆ Wednesday, February 1st: Lunch & Mah-**jongg at Kubel's** in Barnegat Light 11:45 am-3:30 PM
- ◆ Thursday, February 2nd: Dairy Pot Luck Movie night **at Joy & Ron Kern's house; 5:30 PM; *Midnight in Paris***; call Joy 609-978-3669
- ◆ Sunday, February 5, 2012; Breakfast Club—10 AM—Location TBD
- ◆ Friday, February 10, 2012, Family Services —7:30 PM
- ◆ Friday, February 17, 2012—1st Service in our new JCC Meet at Condo at 7 PM for processional
- ◆ Sunday, February 26, 2012: Mah-jongg at the JCC 10 AM
- ◆ Wednesday, March 7, 2012; 9 AM Come bake hamentashen at the JCC
- ◆ Sunday, March 25, 2012 - Breakfast Club at 10:00 AM, Location TBD
- ◆ Saturday, April 7, 2012 - Community Seder at the JCC of LBI; reservations required
- ◆ Sunday, April 22, 2012 - Breakfast Club at 10:00 a.m., Location TBD
- ◆ Date in May TBD - Tour of Philadelphia with our own Judy Abend

Have You

- ⇒ Mailed in your 2012 dues?
- ⇒ Completed the Membership Renewal Application?
- ⇒ Indicated interest in an advertising/congratulatory message in Membership Directory?
- ⇒ Contributed to our High Holiday Appeal?
- ⇒ Resolved to attend Friday eve services periodically?
- ⇒ Participated in our Winter Activity events?
- ⇒ Opened the Shabbat Reminder each week?
- ⇒ Periodically checked our Web-Site www.jccoflbi.org?
- ⇒ Visited our completed building?