

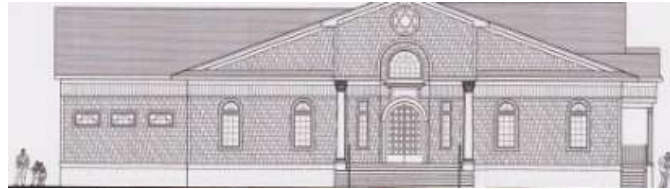


REBUILD UPDATE - Our official groundbreaking ceremony took place on Wednesday, March 16, 2011.

Volume 4, Issue 3
NISAN 5771—
SIVAN 5771
MAY 2011—
JUNE 2011

- ◆ **Capital Campaign Update:** Now is the time to make your donation or to consider upgrading your gift to another level of giving.

“Building the Future”



Our official groundbreaking ceremony took place on Wednesday, March 16, 2011.

The once-in-a-lifetime ceremony was led by the esteemed Rabbi Jacob Friedman. The weather was beautiful, and the turnout was impressive. We drew a crowd of nearly 100 attendees, including local dignitaries, religious leaders from around Long Beach Island, members of the congregation, donors, and the board of trustees.

Overall, it was a joyous day, yet one with many mixed emotions. After all, the old facility served the needs of the local Jewish Community for nearly 50 years. Many joyous occasions were celebrated in the prior building. We will always cherish our memories of these events within our hearts.

However, it is now time to move onward to a new and exciting path. It is time for us all to embrace a future wherein the Jewish community will grow and prosper for many years to come.

We need your help and participation along this journey. Please make a point of driving by the new location and providing us with your thoughts and ideas. When you drive by, you will notice that the pilings are now complete. About six weeks from the date of this writing, we expect a framed structure to be upon the site.

Come and see. Come and reflect. COME AND GROW.



Inside this issue:

Words from the Rabbi	2
President's Report	3
Capital Campaign	4
Walk of Honor	5
Religious School	17
Yahrzeits	18-19
Donations	20-21

Jewish Community Center
of Long Beach Island
15 East 24th Street
Spray Beach, NJ 08008

Mailing Address:

PO Box 2205
Long Beach Township, NJ 08008

Phone: 609-492-4090

Fax: 609-492-7550

Office Hours:

Mon-Wed-Fri
9 AM—1 PM

Website: <http://www.jccoflbi.org>

Email: jccoflbi@gmail.com

Jacob Friedman.....Rabbi
President.....Don Pripstein
Vice President.....Judy Smith
Treasurer.....George Katz
Secretary.....Lynn Berkowitz

Board of Trustees: Ed Dreyfus,
Harold Farin, Ben Gubar, Basil Karp, Joy Kern,
Eileen Levin, Carole Nunberg, Jeri Riffle,
Ron Rosner, Toby Schwait, Karen Schwing,
Jeff Shapiro, Stuart Snyder, Rose Valentine,
Sisterhood Representative: Vivian Fitts
Editor.....Karen Schwing
Office Manager.....Bonnie Clark
Computer Admin.....Marcie Deutsch

WORDS FROM THE RABBI



Jews have often been criticized for referring to themselves as “the Chosen People.” After all, the referring to oneself as “chosen” does sound pompous and snobbish.

The idea of choice is central to the holiday of Shavuot. Shavuot begins on the eve of June 7 and continues on June 8 and 9. Shavuot commemorates God choosing to reveal Himself at Mount Sinai to the Israelites and the Israelites choosing to accept the Torah. They accepted the Torah with enthusiasm, responding *Na-aseh V'nishma*, literally, “we will do and we will listen.” In other words, the Israelites were so eager to accept the Torah, they pledged to fulfill its teachings before they had the opportunity to hear them. They accepted upon themselves God’s *mitzvot*, *commandments*, as spelled out in the Torah.

Through the performance of the *mitzvot*, the Israelites were to become a holy people. In other words, simply being an Israelite does not make one a holy person. Rather, the Israelite becomes holy by acting in a holy manner. The idea that the Israelite is holy simply by being a being a member of the chosen people is firmly rejected by the prophet Amos.

The prophet Amos repudiated the idea that the God of Israel was a national God that Israel could mobilize in the service of the nation’s own interest. According to Amos, being chosen by God did not entitle Israel to special privileges protection. Rather it meant that Israel had accepted upon itself the responsibility to serve God. According to Amos, God is a universal God who is active in the histories of all nations. “Are you not like the Cushites to me, O Israel? Says the Eternal. Did I not bring Israel out of the land of Egypt? And the Philistines from Caphtor, and the Arameans from Kir?” (Amos 9:7). The other nations have not realized this because they have not shared the intimate relationship with God that Israel had been allowed to.

Rabbi Hertz in his commentary on the Bible, explains that two teachings are enunciated through Amos 9:7. The first is that God has guided all the nations as well as Israel. All people are equally dear to Him, and the hand of divine intervention not only Israel’s exodus, but in every historical movement of all nations. The second teaching is that God’s special relationship with Israel rests on moral foundations. A degenerate Israel is of no more worth to God than other immoral nations.

So we see that choosing to be “the chosen” means accepting responsibility. Potential Jews-by-Choice are discouraged at first from converting to Judaism, in part because of the great responsibility to observe the *mitzvot*. However, one can choose to become a member of the Jewish people by choosing to live by the *mitzvot*.

The Rabbis teach that the Torah was given in the desert, in a barren area, because it belongs to no one. In other words, anyone can

(Continued on page 11)

Effective

Monday, January 17, 2011

The JCC of LBI Office will be located at:

117 N. Bay Ave, (2nd St)
Beach Haven

(former law office of Julius Robinson)

PRESIDENT'S MESSAGE



11% of our members live full-time on the island; 20% live full-time on the Mainland.

Did you know that The JCC of LBI has about 280 member units of which 61 (21%) are single person memberships? Of the 280 units, about 31 (11%) live on the Island full-time and 55 (20%) are year-round residents on the Mainland. I am sometimes amazed that, with only 31% of our membership being considered year-round, and many of those traveling and vacationing for several weeks or even a month or so each winter, our Congregation is as active in the winter months as it is. Letters go out, dues and donations come in and are recorded, Bulletins are issued, our web-site is updated, and through our Shabbat Reminder our members are kept informed each week. We have religious school, breakfasts, dinners, other social activities, and services. Of course we wish that we were assured of a minyan every Friday, but our thanks go to all those that plan, organize and attend all these activities.

Did you hear what a fantastic Groundbreaking ceremony we had on March 16th? Check our web-site www.jccoflbi.org to see and hear more about it. Elsewhere in this Bulletin (and on our web-site) you can read about current progress of the construction and of our Capital Campaign.

I guess a Rabbi's job is to teach and inspire, while a President's job is to ask for money and volunteers. To begin construction of our new facility, we had to cut costs wherever possible while keeping the general size and functionality intact. We will initially be using our old chairs instead of new pews, and our existing kitchen appliances, lecterns, tables etc. until we can afford new ones. Our parking lot will be stone instead of asphalt. Even with all these cost cuttings we still have to borrow monies to complete construction, and this requires interest payments and that it be paid back. We still have over 100 members that have not participated, and we need everyone's help. So please contact Rose to **make** a new pledge or **increase** your present one. By the way, check our web-site to see the latest drawings and building plans. Thanks to Karen Schwing, it is amazing what all is included on our site.

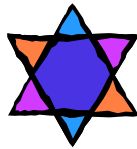
A positive note on money collection is that we raised \$29,432 from 106 contributors in our 2010 High Holiday Appeal. The comparable numbers for 2009 and 2008 are \$29,148 from 125 persons and \$26,903 from 111. While the total dollar and average amounts are up, the number of participants is down. Still not too late to contribute.

As our busy summer season begins, we are faced with many challenges. It will be difficult to maintain our activities without a home of our own. To do this, we will need **YOUR HELP**. Help with the planning and carrying out of our activities, and help by attending and showing your support regardless of where they are held this summer. Any hardship or inconvenience this summer will be rewarded by having a new and larger facility for future use by us and those that follow.

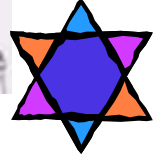
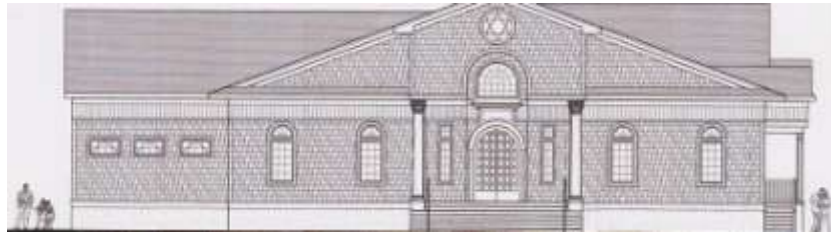
We also need new ideas for our normal and our Capital Campaign fundraising. Each of these can best be done by a committee of creative and innovative people. Eileen Levin has agreed to spearhead this. Please give her or me a call to let us know that you are willing to be a part of these important committees.

SHALOM

Don Pripstein



“Building the Future”



CAPITAL CAMPAIGN UPDATE

We have had a ground breaking and the pilings are now in place. We are ready to begin the work of building our new home! It is a very exciting time for the JCC of LBI and the entire community. Folks driving along the boulevard turn to see what we are doing on 24th Street and are reminded that - **yes, there is a thriving Jewish community here.**

We are so proud of what has been accomplished so far. Thanks to the support of so many people, we have raised close to \$1.2 million towards the rebuild. The additional \$400,000 needed to complete the project will be provided by loans from generous members and friends, which will need to be repaid.

So as you can see our fund raising efforts are far from over.

In the next Bulletin we will be listing all donations from the beginning of our Capital Campaign in December of 2008 until June of 2011, along with their category of giving. If you have not yet done so, now is the time to make your donation or to consider upgrading your gift to another level of giving. If you do not want to have your name listed and you have not notified me of this request, please contact me at

rvalen1963@aol.com

The Capital Campaign Giving Levels are: Angel: \$50,000 or more; Founder: \$25,000 - \$49,999; Patron: \$18,000 - \$24,999; Benefactor: \$10,000 - \$17,999; Builder: \$5,000 - \$9,999; Friend: \$1,500 - \$4,999; Supporter \$500 - \$1,499; Contributor - up to \$499

I am looking forward to being back on LBI and to be able to see for myself the construction of our new home. Until then, I will follow our progress on the Center web site: www.jccoflbi.org. Please check in with the web site often as well.

ROSE VALENTINE, Capital Campaign Chair
Rvalen1963@aol.com

HONOR ROLL: A LISTING OF MEMBERS AND FRIENDS WHO HAVE MADE PLEDGES AND GIFTS TO THE CAPITAL CAMPAIGN APPEAL

From December 31, 2010 to April 15, 2011

PATRON - \$18,000 – 24,999
 *Martha & Charles Schleifer
BENEFACTOR - \$10,000 - \$17,999
 *Marilyn Alexander
SUPPORTER - \$500 - \$1,499
 Rita & Lewis Pepperman

CONTRIBUTOR – UP TO \$499
 Bernice Luxenburg
 Arleen & Harry Moffit
 Sandra & Mark Rosenbloom

* Upgrade from previous category listed

WALK OF HONOR

Dear Congregant,

On behalf of the "Rebuild Committee", we would like to invite every member of the JCC of Long Beach Island to participate in the creation of our "Walk of Honor" which will be a beautiful part of the landscape of our new building.

We are well underway and moving toward completing the new building in the fall of 2011.

The front entrance to the building, facing Long Beach Boulevard, will be prominently paved with donated commemorative bricks. Each brick will be engraved with the donor's name, family event, or memorial.

We are excited about our new, beautiful JCC building and sanctuary.

We hope you will support this program by purchasing one or more bricks by completing the form below. See the web site: www.jccoflbi.org to fill in the appropriate engraving specifics (see BRICK PAVER on the top of the home page). You will also receive this information in the mail in the next few weeks.

We hope all members will participate in the "Walk of Honor" in addition to your already generous donations to our Capital Campaign.

Please return the order forms along with your check.

Once again, we appreciate your support for this program and look forward to many wonderful years at the Jewish Community Center of LBI.

Sincerely,

Eileen Levin, Chair of the "Walk of Honor"

JCC OF LBI "Walk of Honor" Donor Form

Bricks are available in four sizes: 4" X 8", 6" X 9", 8" X 8" and "12" X 12"

Number of Bricks:

_____ 4" x 8" bricks @\$150.00 \$ _____

Maximum of 3 lines of 14 characters including punctuations and spaces.

_____ 6"x 9" bricks @ 250.00 \$ _____

Maximum of 3 lines of 15 characters including punctuations and spaces.

_____ 8" x 8" bricks @ 350.00 \$ _____

Maximum of 4 lines of 14 characters including punctuations and spaces.

_____ 12"x12" bricks @ 500.00 \$ _____

Maximum of 6 lines of 17 characters including punctuations and spaces.

Total _____ \$ _____

Please complete the form for the brick or bricks, you wish to purchase (fill out specific form for your brick paver choice). Also enclose this order form with your contribution made out to the JCC of LBI to:

JCC OF LBI

PO Box 2205, Long Beach Township, NJ 08008

You can also choose to make you payment online through the PayPal Program. See www.jccoflbi.org

For further information call 609-492-4090

The JCC of LBI is a 501(c) (3) organization. Brick orders are tax-deductible

BUY-A-BRICK ORDER FORM 4 x 8 Paver

4" x 8"
Paver
\$150.00

Jewish Community Center of Long Beach Island

4 x 8 PAVER - \$150.00

ENGRAVING SUGGESTIONS:

Each brick may include a maximum of 3 lines of 15 characters on each line including punctuations and spaces. In order to use dashes (-) we must put a space on either side for it to look good.

NAME _____

ADDRESS _____

PHONE _____ EMAIL _____

BUY-A-BRICK ORDER FORM 6 x 9 Paver

6" x 9"
Paver
\$250.00

Jewish Community Center of Long Beach Island

BRICK PAVER ENGRAVING

6" x 9" PAVER - \$250.00

ENGRAVING SUGGESTIONS:

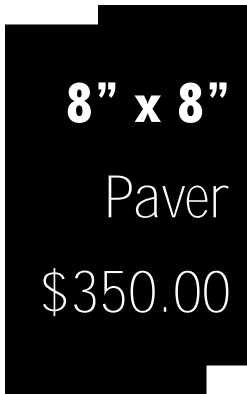
Each brick may include a maximum of 3 lines of 15 characters on each line including spaces and punctuations. In order to use dashes (-) we must put a space on either side for it to look good.

NAME_____

ADDRESS_____

PHONE_____EMAIL_____

BUY-A-BRICK ORDER FORM 8 x 8 Paver



Jewish Community Center of Long Beach Island

BRICK PAVER ENGRAVING

8" x 8" PAVER - \$350.00

ENGRAVING SUGGESTIONS:

Each brick may include a maximum of 4 lines of 14 characters on each line including spaces and punctuations. In order to use dashes (-) we must put a space on either side for it to look good.

NAME _____

ADDRESS _____

PHONE _____ EMAIL _____

BUY-A-BRICK ORDER FORM 12 x 12 Paver

12" x 12"
Paver
\$500.00

Jewish Community Center of Long Beach Island

BRICK PAVER ENGRAVING

12" x 12" PAVER - \$500.00

ENGRAVING SUGGESTIONS:

Each brick may include a maximum of 6 lines of 17 characters on each line including spaces and punctuations. In order to use dashes (-) we must put a space on either side for it to look good.

NAME _____

ADDRESS _____

PHONE _____ EMAIL _____

TRANSITION PLANNING

Services- Weekly Friday night Services continue at St. Thomas of Villanova church in Surf City. Passover services will be held there as well. The Interfaith service will be held on April 29. Rabbi will announce when Saturday morning Services will begin for the season.

Everyone is asking whether High Holiday services will be held in our new building or at the church. A decision will be made in early June so that tickets can be printed and other preparations set in motion.

All depends on the construction schedule for the new JCC. There is a chance that the building will be ready for High Holiday services, but it is more likely that we will use the church. Our plan is to prepare to hold services at the church, but if the new building is ready, we will switch.

Storage- Closely related to the question of where we will hold High Holiday Services is the question of when we will return those items to the new JCC that are currently elsewhere. To hold services, we will need Mahzors (either location) currently stored at the Cohen's home in Beach Haven. If the services are held at the new JCC, we will need chairs, lecterns and other items currently in the Wolpert's garage, in addition to the prayer books. We will also have to buy or rent additional chairs.

To house the Torahs at the church we will need the temporary ark whose parts are stored in the garage. Clearly there will be lots to do to prepare, no matter where services are held, but the preparations will be different.

We cannot move equipment into the new JCC until the building is ready. Obviously, chairs can't come in until carpeting is down. For this reason we will prepare a schedule of when to move our stuff back when we are close to the construction completion date.

Office - Our office will remain in the Robinson building until the new JCC is completed and furniture and electronics are in place. It will be determined which of our current equipment can be used in our new home. Some replacement furniture is stored in the condo garage.

Hebrew School- Sunday classes continue in the condo on a satisfactory basis.

DEDICATION ACTIVITY -Early Summer-2012

It is not too early to start planning our big event in 2012 which will be a gala dedication of our new building plus a look back at the 50th Anniversary of our old one. We hope this will be a cocktail party/dinner dance with invited dignitaries on hand. This exciting activity will require a lot of planning and work, and we will need a committed and dedicated group of members to serve on the committees and chair various aspects of it. We need all your ideas. Please let me know if you are willing to be an integral part of this endeavor. I hope that initial meetings for this will begin this June.

Don Pripstein

WORDS FROM THE RABBI , continued

(Continued from page 2)

accept the teachings of the Torah. The Book of Ruth, which is read on Shavuot, tells the story of Ruth the Moabite who is considered the model convert to Judaism. Ruth did not have an impressive lineage. In fact, the Moabites were the enemies of Israel.

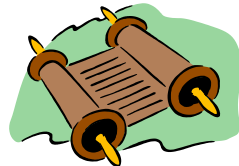
Yet Ruth chooses to follow her mother-in-law, Naomi, back to Israel and becomes an Israelite. Ruth is not shunned for becoming an Israelite. Rather, Jewish history views her as an exalted person. Furthermore, Ruth is the great-grandmother of King David, from whom, according to Jewish thought, the Messianic Age would come to be.

Anyone who believes that he or she is superior to others because he or she is born Jewish misses the message of Jewish teaching. Being chosen does not confer any sort of genetic superiority. For the Jew, being chosen means choosing to be the example of righteous living and being a "light unto the nations." Being chosen means that we choose to live a life that respects the lives of others, Jew and non-Jew. Being chosen means to know that all of God's children are created in His image.

As we celebrate the revelation of the Torah, let us choose to strengthen our relationship with God and live a life of good deeds. All people are chosen – and we affirm that choice by how we live.

Chag Sameach.

Rabbi Jack



**Get Your Business
Out To The Membership**

Place an ad in the 2011 Directory

\$90 whole page
\$50 half page
\$30 quarter page
\$20 eighth of a page

Send your check made out to the JCC
of LBI along with a business card or an
ad to:

Toby I. Schwait
22312 Whistling Pines Lane
Boca Ratón, FL 33428

Please indicate on the check on the
memo line that it's for a Directory Ad.



Volunteers needed to work on Fundraising Committee with the Fundraising Chairman for future events at the JCC.

Anyone willing to help chair or work on one or more fundraising projects in the next few months, please call Eileen Levin at 856-465-3596.

SERVICES

*Volunteer
to be
a
Minyanaire
—It's
a
mitzvah!*

The JCC of LBI Shabbat services are now being held each Friday evening at 7:30 PM (8 PM beginning Friday, May 27, 2011—Memorial Day Weekend) at St. Thomas of Villanova Catholic Church in Surf City. Use the parking lot on north side of church (14th St), and enter the north door. St. Francis has graciously and generously allowed us to use this facility for all our services during the Transition Period.

Saturday morning Shabbat services will begin Memorial Day weekend, Saturday, May 28, 2011, at 9:30 AM. All services will be held at St. Thomas of Villanova Church in Surf City.

WHERE IS EVERYTHING?

While the Center is under construction we are continuing to operate but in various places on the Island

SERVICES are being held at St. Thomas of Villanova on 13th Street and the Boulevard in Surf City. Please park on the North side of the church and enter via the right hand door at the top of the ramp on that side of the building.

RELIGIOUS SCHOOL Sunday sessions are being **held in the Rabbi's house.**

JCC OFFICE is now located in the law offices of Julius Robinson, 2nd Street and Bay Avenue in Beach Haven. The telephone number, fax, email and web site remains the same.



VISIT US ON THE WEB at
www.jccoflbi.org



CANDLE LIGHTING

May 6, 2011	7:37 PM
May 13, 2011	7:44 PM
May 20, 2011	7:50 PM
May 27, 2011	7:56 PM
June 3, 2011	8:01 PM
June 10, 2011	8:05 PM
June 17, 2011	8:09 PM
June 24, 2011	8:10 PM
July 1, 2011	8:10 PM
July 8, 2011	8:09 PM

WELCOME

We are happy to announce the following new members and welcome them to our JCC family:

Dina Ranade
Eric and Ilene Estes

MEMBERSHIP DIRECTORY ADDITIONS

Dina Ranade

117 Engleside Ave.
Beach Haven, NJ 08008
Cell: 954 778 2701
Phone: 609 492 3033
Email: dranade@comcast.net



Eric and Ilene Estes

104 Saint Andrews Way
Blue Bell, PA 19422-1286
Home: 484 231 8880
Cell: 860 983 7466

Dear Members:

There are times when I do not hear about a simcha or illness or a death in a JCC family for a few days or even weeks. In some cases, I hear second-hand, and although I am grateful for the notification, it would be appreciated if you would call me directly.

I can be reached at the following numbers:

Lakewood: 732-276-5519

LBI: 609-492-2000

Cell Phone: 732-610-8115

If I do not answer, leave a message on the answering machine and I will get back to you ASAP.

Rabbi Jack



- * Arthur and Barbara Cohen who were honored by the Highland Park Conservative Temple for long and meritorious service
- * Bonnie Farin being honored on May 5th by the Mid Atlantic Region of The United Synagogue of Conservative Judaism. She will receive Medinat Hagan recognition for her work as President of the sisterhood of Temple Beth Ahm in Aberdeen, N.J. During her tenure the Sisterhood undertook many new initiatives including a monthly Rosh Hodesh program. Her leadership has revitalized TBA's Sisterhood and led to a growth in membership and activities
- * Susan and George Karp on the marriage of their son, Adam
- * Jackie and Paul Avondoglio on the engagement of their son, Daniel
- * Ali and Rabbi Jack Friedman on the engagement of their granddaughter, Rachel Lupow
- * Andy Schwing for winning the Long Beach Island Grade School Spelling Bee

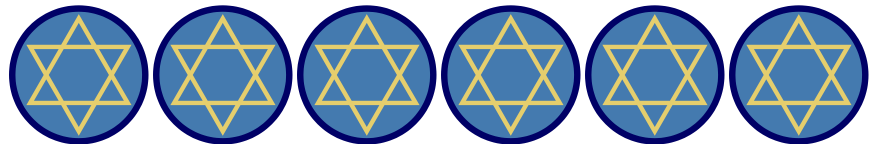
SPECIAL BOARD MEETING SUMMARY: Jan. 9, 2011

Attendees: Lynn Berkowitz, Ed Dreyfus, Harold Farin, Ben Gubar, Basil Karp, George Katz, Joy Kern, Eileen Levin, Carole Nunberg, Don Pripstein, Jeri Riffle, Ron Rosner, Karen Schwing, Jeff Shapiro, Judy Smith, Stuart Snyder, Rose Valentine

This special meeting was held to discuss and vote on a resolution, which provided additional details to move ahead with the signing of the contract with the Bannett Group.

- J. Shapiro reported that he, S. Snyder and E. Dreyfus reviewed the contract and made all needed changes including language regarding protection of the stained glass windows and memorial boards. Brearley will provide final drawings on January 10. The Township is expected to approve the construction drawings, which reduced the size of the building on January 12. Once Bannett receives all the final documents and construction drawings, he will review and sign the contract.
- G. Katz will make sure the builder's risk insurance is in place. D. Pripstein will make sure that our property insurance adequately covers the stained glass windows in storage.
- The board unanimously approved a resolution to proceed with the Bannett Group on construction of the new JCC facility in conformance with the design and specifications of the JCC at a cost not to exceed \$1,350,000. The resolution included Appendix A, which summarized the contract and its attachments.
- R. Valentine has prepared a press release to publicize plans for the rebuild of the JCC. Rebuild Committee members, Bannett and Brearley will have an opportunity to review the press release before finalized.
- J. Shapiro will include information from the press release into the Rebuild article planned for the next Bulletin.

Once the contract is signed, E. Dreyfus stated that a letter should go out to notify the other building contractors that we have signed with the Bannett Group.



LEGACY

If you are planning to initiate or change your will or estate plan, please remember and include The Jewish Community Center of Long Beach Island (JCC of LBI) as part of your legacy. The monies can be used for a specific purpose as designated by you, or added to an endowment fund already set up to assure the ability to continue providing a full-service congregation to serve the Jewish people of the area.

This legacy can be accomplished by a simple bequest in your will, by one of the allowable charitable trusts where you get an immediate tax advantage, or through life insurance.

PLEASE DO IT NOW! Please check with your attorney or insurance agent. If you have any questions or need additional information, contact

Don Pripstein.

BOARD MEETING SUMMARY: March 8, 2011

Attendees: Lynn Berkowitz, Ed Dreyfus, Harold Farin, Vivian Fitts, Rabbi Jack Friedman, Basil Karp, George Katz, Eileen Levin, Don Pripstein, Jeri Riffle, Ron Rosner, Toby Schwait, Karen Schwing, Jeff Shapiro, Judy Smith, Rose Valentine

JCC Rebuild Committee

- J. Shapiro reported that this week Bannett will start driving the pilings.
- The Groundbreaking ceremony will be held on Wed. March 16th at 11 a.m. A number of special guests from the community have been invited to attend. The congregation will be notified.
- Bannett targets completion of the building (i.e. Certificate of Occupancy issued) by Labor Day. The board considers this to be an optimistic target date.

Bannett will hold meetings with the Rebuild Committee and provide a written report every 2 weeks.

Transition Committee

H. Farin reported that the Religious School is functioning, the office has been established and operating at Julius Robinson's office and Shabbat services are being held regularly.

Rebuild Capital Campaign

- R. Valentine stated that we have a total of 188 donors and a grand total of \$1,153,608 including pledges, donations and money raised from raffles and the sale of the condo. 110 members have not yet made a pledge.

Other Topics

- The board approved the 2011 budget presented by the Finance Committee.
 - The board reviewed a proposal for a membership directory with family photos that would also be a fundraiser by selling ads/congratulatory messages. Questions raised will need to be addressed and the topic will be discussed further at the next meeting.
 - The board reviewed a fundraising proposal to allow businesses to provide services to JCC members and the business owner to give back a percentage made to the JCC. This proposal requires further legal review by Stuart Snyder and then further discussion at the next meeting.
 - The board approved a donation of \$50 to the Temple in Highland Park for an ad to show support to members Arthur and Barbara Cohen who are being honored there.
 - The board approved the JCC joining the LBI Business Alliance for 1 year at a cost of \$100. This will offer the benefit of networking with people/business and the JCC will be featured on their website.
 - D. Pripstein authorized the donation of \$150 to the Interfaith Council.
 - Father Steve Kluge will be the keynote speaker at the Interfaith Services on April 29th.
 - The board decided to combine plans for a 50th Anniversary celebration with a dedication for the new JCC building. Plans are underway for a separate fundraising cocktail party scheduled for Sunday, July 31st at the Surf City Yacht Club.
 - The JCC Passover Seder will be held on Tuesday, April 19th at Maris Stella Retreat and Conference Center. The kosher meal will be catered.
 - Recent Winter Programs have included Shabbat dinners, breakfasts, a Chinese New Year luncheon, Sunday and Wednesday Mah Jongg, and bowling.
 - The board is investigating signs to advertise the JCC on roads accessible to LBI and a sign to be placed on-site noting this is the future site of the JCC with a picture of the new building.
- Spaces are being sold for the Bazaars and Art Festival, both to be held off-site
- D. Pripstein is looking to identify a Fundraising Chairperson.

HELP WITH OUR "FUND RAISER"

Rabbi Jack answers the phone. A voice says,
'Hello, is this Rabbi Jack?'

'It is!'

'This is the IRS. Can you help us?'

'I can!'

'Do you know a Ted Houlihanowitz?'

'I do!'

'Is he a member of your congregation?'

'He is!'

'Did he donate \$10,000 to the synagogue?'

'He will!!!!'

Tax days, as well as Passover, are both harbingers that the summer season is soon upon us. This year the physical JCC is missing but this, hopefully, will be the only summer without a building. In Biblical times, all the men were assessed a half shekel during the census to not only aid the counting but to defray the costs of the Temple.

We are still short some shekels to build the new JCC. With part of your tax refund (or make believe you owed a little more) make the acronym IRS mean I helped Restore the Synagogue.



<http://jccoflbi.shutterfly.com/pictures>

- ⇒ Unable to attend the JCC Ground Breaking Ceremony? Missed seeing the JCC Demolition? Want to see what is going on at 15 East 24th Street? You can still be apart of it.
- ⇒ Video and pictures are available for your viewing pleasure—just visit the website listed above.
- ⇒ Have you taken some great photos that you would like to share with our JCC family? Become a member of the JCC shutterfly site and you can upload your photos yourself.
- ⇒ Anyone, after creating a free, personal shutterfly account, may purchase any pictures available on our site, for your personal use.

RELIGIOUS SCHOOL MUSINGS

It is
lieve that it
months since
port. 2011 is
and the stu-
a c c o m -
much!

S t u -
Hebrew 1, 2



hard to be-
has been 3
my last re-
full swing
dents have
plished so

dents of the
and 3

classes continue to meet at the Rabbi's Residence on Sundays. Our Sundays are action packed: including Bible Stories, learning colors, reviewing Hebrew and Prayer AND fun activities. I am proud to announce that the students are almost done with their Bible Story Book. We have traced the genealogy of the Jewish People from Adam to Moses. The kids have worked so hard and have learned many valuable lessons along the way. With the help of Jessica Schwing (and Samantha Eisenberg) they are now well versed in all of the colors of the Rainbow.

Our Hebrew 2 and 3 students continue to make amazing progress with Nitza Solon on Thursdays. Both groups have continued to learn new letters and practice at home every week. This has enabled them to make substantial progress in their books.

The Confirmation Class is having a blast learning with Mrs. B! It warms my heart to see so many of them there every week. Volunteering to attend classes every week after their Bar/Bat Mitzvah is something that each and every one of them should be proud of. The students continue to discuss "higher level" topics and ponder Judaism. Lessons have included: Should a Jew worship in a Church?, Famous Jews, History/Holiday and a review of the structure of the TaNaCh, Talmud, Mishna and Gemara.

The Tu B'Shevat and Purim Carnivals were a great success. I would like to thank Staci Irwin and the staff of the Barnegat Recreation Center for allowing us to use the facility for these events. Neither of these events would have been possible were it not for the use of this facility.

Finally, I would like to tell you about our Lakewood Experience. The children had an opportunity to gain insight into the Orthodox Community, visit a Matzoh Factory and tour a Yeshiva. They experience the Mitzvah of Matzoh making and stood in utter amazement as every 18 minutes dough was mixed, baked and equipment was scrubbed. They witnessed the Rabbinical Supervision that occurs in a Kosher establishment. At the Yeshiva they toured an Industrial Kosher Kitchen and witnessed hundreds of Orthodox Jews studying Torah. Overall, it opened their eyes to the Orthodox world that exists just a few miles up the Garden State Parkway. I am sure that the next time they take a bite of Matzoh they will remember the trip to the little factory up in Lakewood where every 18 minutes they bake a batch of unleavened bread - I know that I will!

Michelle Goldman
Hebrew School
Principal

Yahrzeit Observances

“It is customary to make a donation to the synagogue in memory of a loved one.”

*** Listed on the JCC of LBI Yahrzeit Memorial Board.**



IYYAR

Read at Services May 6, 2011

- 3 George Rosner
- 3 Phil Pepperman
- 3 Fanny Kelsen
- 3 Lazar Lebovitz
- 4 Jack Halpern
- 4 Nathan Bard
- 4 Batia Shatz
- 5 Harold Kugel
- 5 Ann Bernstein
- 6 *Nathan Rubenstein
- 6 Al Baker
- 6 Ben Levenstein
- 7 Abraham Mizrahi
- 8 Harry Papier
- 8 *Gussie Treiber
- 9 *Anna Gerber
- 9 *Nellie Callet

Read at Services May 13, 2011

- 10 Ruth Lipshultz
- 10 Hyla Lipsky
- 10 Stephanie Schwait
- 11 Edward Jackson
- 11 *Betty Gorelick
- 13 Samuel Mendlow
- 13 Dr. Harold Feldman
- 13 Benjamin Spielberg
- 14 Jeanette Barrish
- 14 David Epstein
- 15 Dr. Stephen Lipsky
- 15 Hyman Danon
- 15 *Rebecca Gerber
- 16 Lillian Medvin
- 16 *Eric Katz
- 16 Louis Cohen



Read at Services May 20, 2011

- 17 Morris Luterman
- 17 Ernest Lippman
- 17 Rose Buznitsky
- 17 Matilda Tubis
- 17 Irene Ginsburg
- 17 Evelyn Lizzack
- 19 Kathleen Rifkin
- 20 *David Slott
- 21 Robert Gottlin
- 21 *Dora Koyner
- 21 *Cory Alpert
- 22 Ann Taub
- 22 Emanuel Diamnd
- 22 Bernard Ostroff
- 22 Evelyn Rubinfeld
- 22 Bernard Ostroff
- 23 Howard Sherry
- 23 George Fuhrmann
- 23 *Mollie Bass
- 23 George Fuhrmann
- 23 Samuel Buznitsky
- 23 Clara Hoffman

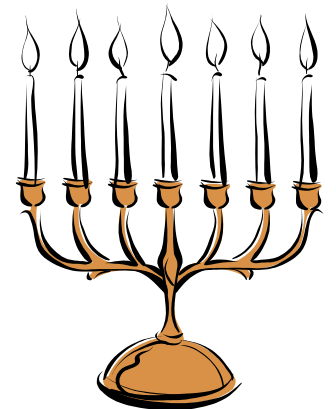


Read at Services May 27, 2011

- 25 Joseph Tomar
 - 25 *Milton Britz
 - 26 David Kaplan
 - 26 *Dr. Harry Herman
 - 26 Elizabeth Piwosky
 - 27 *Jerome Katz
 - 28 *Harry Solomon
 - 28 Kate Alexander
 - 28 Vera Gellard Lipman
 - 29 Lillian Herman
 - 29 Leona Adelman
- SIVAN**
- 1 Esther Epstein
 - 1 *Gussie Meyerson

Read at Services June 3, 2011

- 3 *Wilma Lang
- 3 Bob Shrank
- 3 *Ruth Friedman
- 3 Adele Graboyes
- 4 *Shirley Guttman Frankfurt
- 4 Leah Jacobs
- 4 *Abraham Fruchtman
- 4 *Minnie Starr
- 4 Leo Wasserman
- 5 Jacob Bloom
- 5 Ruth Brill
- 5 Faye Baker
- 6 Shirley Rosner
- 7 Ike Schwaff
- 8 Irene Lee Epstein



Read at Services June 10, 2011

- 10 David Luterman
- 10 Sidney Denbo
- 11 Terry Shapiro
- 11 Gertrude Miller
- 12 Jeanne Paris
- 12 *Benyamin Livshits
- 12 Edward Oertel
- 12 Jennie Schlanger
- 12 *Anna Gubar
- 13 Ida Schreiber
- 13 George Cofsky
- 13 Leo E. Baron
- 13 Jenny Kessler
- 13 Avram Shatz
- 13 Sadie Chalek
- 13 Bernard Diamond
- 15 *Samuel Starr
- 15 *William Feather

YAHRZEIT OBSERVANCES

“May the souls of the dearly departed be bound up in the bonds of eternal life.”

Read at Services June 17, 2011

- 16 Grace Berman
- 16 Sylvia S. Marcus
- 16 Ida Rose Opatosky
- 16 Isidor Harris
- 16 *Gene Mendlow
- 17 *Sigmund Moskowitz
- 17 Miriam Harris
- 17 Joseph Herman
- 17 Rosalind Mularz
- 17 *Albert Rosenfeld
- 18 Jacob Hoffman
- 18 Hilda Hess Baron
- 18 Annie Weissler
- 19 Joan Podos
- 19 Mitchell Konner
- 21 Sophie Hellman
- 22 Sallie Wichman
- 22 William Schlanger

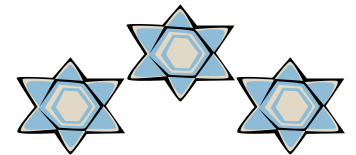
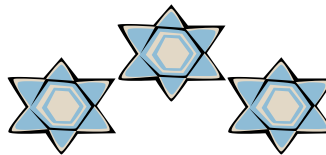
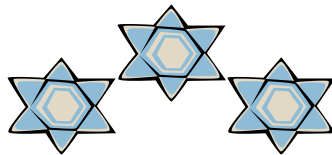


Read at Services June 24, 2011

- 23 Benjamin August
- 23 Harvey Levin
- 23 Martin Berger
- 25 Howard Breslow
- 26 Ben Reiff
- 26 Edward Weiss
- 26 Anne Copeland
- 27 Rose Rudnick
- 28 George Wolpert
- 28 Charlotte Rosenberg

Read at Services July 1, 2011

- 30 Betty Sampson
- 30 *Malcolm S. Zlotkin
TAMMUZ
- 1 *Albert Alexander
- 1 *Dr. H. Robert Freed
- 1 *Benjamin Einhorn
- 3 William Ginsburg
- 3 David Scheer
- 4 *Isadore Shrensel
- 4 *Albert Jaffe
- 4 Solkin C. Copeland
- 4 Joseph DiCicco
- 5 Rebecca Weiner
- 5 *Jacob Plon
- 6 Paul Schwartz



RABBI JACK'S

ADULT EDUCATION SERIES 2011

- Classes from June through September 2011 – Thursday Evenings
- June 2 - Exploring Judaism
- June 16 – Considering Judaism
- June 23 -Talking to children about God
- June 30 – Interfaith Families & Judaism
- July 7 - Dealing with Inter-faith Grandchildren
- July 14 – Talking to children about death
- July 21 - Living with cancer
- July 28 - Facing Recovery From Surgery
- July 28 – Jewish Hospice
- August 4 – The death of a spouse
- August 18 -Decisions about the end of life
- August 25 - From Death to Shiva
- September 1 – Take the time to mourn
- September 8 - Forgiveness

INTERFAITH SERVICE



The annual Inter-faith service, hosted each year at a Sabbath Eve service, has been scheduled for Friday evening, April 29th at the St. Thomas Church, at 7:30 PM.

Father Steve Kluge, senior pastor of St. Francis Church will be the guest speaker. Thanks to Father Steve, the JCC has the use of the church until the new JCC synagogue is built.



The Island Singers will once again be part of the program.

THANK YOU FOR YOUR GENEROUS DONATIONS

May the
memory of
your dearly
departed be
a source of
comfort and
blessing.

IN MEMORY OF

- ◆ Anna Weill by Ben Gubar
- ◆ Anna Herman by Bernard Herman
- ◆ Esther Hirsch by Myron Hirsch
- ◆ Walter Kleinman by Bonnie & Harold Farin, Joan & Gerry Ely, JoAnne Levine
- ◆ Marvin Alexander by Millie & Tiger Wolpert, George Katz, Inge & Milton Batoff, Marcia & Mort Nelson, Elayne & Robert Simandl, Rose Starr, Selma & Larry Troum, JoAnne Levine, Judy & Ken Abend, Mickie & Al Kaplan, Eileen & Ellis Levin, Barbara & Scott Goldstien, Judy Smith & Howard Tomar, Nona L. Abrams
- ◆ Michael Lippe by JoAnne Levine. Judy Smith & Howard Tomar
- ◆ Joan Goldman by Barbara & Scott Goldstein
- ◆ Frieda J. Klein by Vivian Fitts
- ◆ Gloria Cohen by Cecile Kessler
- ◆ Gene Klein by Vivian Fitts
- ◆ Daniel Glassman by Iris Glassman
- ◆ Sam Fine by Millie Wolpert
- ◆ Louise Paul by Virginia Josephson
- ◆ Jack Lilienfeld by Elizabeth Stone
- ◆ Betty Sitzer by Iris Glassman
- ◆ Felicia Smith by Barbara & Scott Goldstein
- ◆ Gertrude Fitts by Marvin Fitts
- ◆ Barnet Bookman by Ellen Tesler
- ◆ Milton Smith by Judy Smith
- ◆ Benjamin Katz by George Katz
- ◆ Ida Plotkin by Elyse Pepose
- ◆ Benjamin Reiser by Eileen Powitz
- ◆ Mae Lazar by Eileen Buznitsky
- ◆ Esther Renzin by Wynne Davis
- ◆ Sidney Schlanger by Arleen Moffitt
- ◆ Amanda Kanowitz by Eileen & Richard Feldgus
- ◆ Rose Lyons Glickman by Eileen Feldgus
- ◆ William Batoff by Inge & Milt Batoff
- ◆ Joseph Friedman by Rabbi Jacob Friedman
- ◆ Harold Koyner by Ali Friedman
- ◆ Florence Marmon by Beverly DeAngelo
- ◆ Hannah Beck by Shelly Weisfeld
- ◆ Hilda Rosenberg by Bernard Rosenberg
- ◆ Minnie Britz by Jay Britz
- ◆ Lillian Salander by Marcia Nelson
- ◆ Solomen Chalek by Joy Kern
- ◆ Sidney Kronenberg by Lynn Berman
- ◆ Marvin Alexander and Walter Kleinman by Vivian & Marvin Fitts
- ◆ Benjamin Epstein by Renee Goldman
- ◆ Bernard Gubar by Ben Gubar
- ◆ George Gubar by Ben Gubar
- ◆ Michael Beck by Shelly Weisfeld
- ◆ Morris Herman by Bernard Herman
- ◆ Daniel Lang by Elsa Dreyfus
- ◆ Helen Applebaum by Janet Cohen
- ◆ Solomon Schall by Janet Cohen
- ◆ Betty Schleifer by Charles Schleifer
- ◆ Irving List by Lorraine Barron
- ◆ Lawrence Alpert by Roslyn Alpert
- ◆ Sylvia Glasser by Murry Opatosky
- ◆ Isadore Opatosky by Murry Opatosky

Thank you
for
supporting
the JCC of
LBI

DONATIONS, Continued

- ◆ Jeanette Rosen by Beth Seavey
- ◆ Eleanor Wichman Satir by Annette Kaplan
- ◆ Albert Kessler by Henry Kessler
- ◆ Isador London by Eileen Levin
- ◆ Tee Gottlieb by Diane Tucker
- ◆ Morris Uniglicht by Lawrence Uniglicht
- ◆ Stanley Karp by George Karp
- ◆ Bessie Schwaff by Arleen Moffitt

RABBI'S FUND

- ◆ Muriel Schwartzstein by Anne & Phil Lewis
- ◆ Joe Rothman by Anne & Phil Lewis

TRIBUTES

- ◆ Carole Nunberg speedy recovery by Judy Smith & Howard Tomar, Rose Starr, Eileen & Ellis Levin, Phyllis & Donald Slutsky & Helen & Sig Ginsburg, Marcie Deutsch Family, Bonnie Clark, Millie & Tiger Wolpert
- ◆ Madyson Leah Bell by Selma & Larry Troum
- ◆ Henry Medvin happy birthday by Selma & Larry Troum
- ◆ JoAnne Levine speedy recovery by Judy & Ken Abend
- ◆ JoAnne Levine and Ian Katz get well by Judy Smith & Howard Tomar

- ◆ Rabbi Jacob Friedman appreciation by Toby Schier
- ◆ Joan Lombardi, JoAnne Levine, Carole Nunberg get well by Millie & Tiger Wolpert
- ◆ Carole Nunberg & JoAnne Levine get well by Vivian & Marvin Fitts
- ◆ Henry Medvin big birthday by Lenore Miller & Lenore & William Weiss
- ◆ Rose Starr by Judith Smith & Howard Tomar, speedy recovery

PRAYER BOOK

- ◆ J. Gilbert Sholin by Marilyn Alexander

Mah-jongg Continues



Wednesdays 12:30-4 PM

At the Surf City Library. Contact Judy Smith

Sun. May 15th: 9:30 am

Sun. June 5th: 9:30 am

Contact Karen Schwing at Karen_schwing@yahoo.com
for more information on Sunday Mah-jongg

SUPPORT THE JCC of LBI

2011 Membership renewals were mailed in December. Dues are \$400.00 for a family membership and \$200 for a single membership. Your check should be sent to the JCC of LBI, PO 2205, Long Beach Township, NJ 08008 and marked as dues on the check or with a note. Please enclose the membership form with your check. An information sheet with your address information and yearzeit information was included in the mailing. Please return it as well with any corrections. You can also download the membership form from our web site: www.jccoflbi.org

We are planning to add a section of advertisements and a listing by category of our **members' professions and businesses**. If you are interested in participating, please so indicate on your response.

SHOP-RITE SCRIP

Help the JCC earn "free" money by purchasing Shop-Rite Scrip from the JCC Office during normal business hours. For every \$1,000 of Shop-Rite Scrip the JCC sells, we earn \$50. If you shop at Shop-Rite regularly, be sure to stop by the JCC office first and pick yours up today. This is an extremely easy way for the JCC to raise much needed revenue. If every JCC member purchased just \$250 of Scrip over the summer, we could raise over \$1,200 for the JCC. Just imagine what we could raise if everyone used Shop-Rite scrip for all of their grocery shopping...

SHORE PROPERTY CONCIERGE (SPC, Inc.)

We are specialists in maintenance, repairs and "handyman services" for home owners as well as year round upkeep.

Every service and job 200% Guaranteed in writing!

In addition, we will donate 20% of the total service or job (excluding supplies) back to the JCC Rebuild Capital Campaign.

Spring is here and summer is around the corner; call us today to get ALL your projects done, so you can relax and have fun!

Call Michael Bond today at 609-781-7018

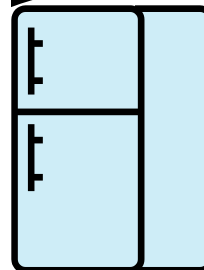
Skipper Dipper™

9305 Long Beach Blvd
Peahala Park, NJ
(609) 492-9680

*LBI's Favorite
Ice Cream Since 1978!*



FOR SALE



Refrigerator
from JCC Kitchen
Good Working Condition
Contact Eileen Levin at
856-465-3956

Earth-friendly gift bags for every occasion

- BAR MITZVAH
- BAT MITZVAH
- HANNUKAH
- PURIM



Tikkun Olam™
love ▲ awareness ▼ charity

- WELLNESS
- SHABBAT
- ECO-STUDENT
- PASSOVER

eco-friendly
tree free
fair trade.

unique
handmade
gifts

visit www.tikkunolam-lac.com or call 201-847-1962

Office•609•494•2560 x: 19
Fax•609•494•1041

Cell: 856•465•3596
E-Mail: elevin505@verizon.net

AGER REALTY

LONG BEACH BOULEVARD AT 34TH STREET
BRANT BEACH, NEW JERSEY 08008

EILEEN LEVIN
SALES ASSOCIATE



LONG BEACH ISLAND SALES & RENTALS

Diane Turton,
REALTORS

JEFFREY SHAPIRO

Broker/Sales Associate

Bus: 609-492-7000 x23 Fax: 609-492-2708

Eve: 609-494-4525 Cell: 732-580-7457

E-mail: jshapiro@dianeturton.com

Website: www.dianeturton.com

217 N. Bay Avenue, Beach Haven, NJ 08008

RESORTWEAR  SPORTSWEAR
COCONUTS

**SCHOONER'S
WHARF**

325 Ninth St.
Beach Haven, NJ
609-492-3711

**CORNER OF
17TH & BLVD.**

1702 Long Beach Blvd.
Ship Bottom, NJ
609-494-4608

Open Daily

**DELI KING
CLARK**

30 Clarkton Drive
Clark, NJ

732-574-2040 or

1-800-410-DELI

Under Kosher Supervision of "When You Need Us"
Rabbi Isaiah Hertzberg



Aaron Tepper
Licensed Real Estate Agent

Century 21

MARY ALLEN REALTY INC

2909 Long Beach Boulevard
Ship Bottom, New Jersey 08008

Toll Free 800.524.4786 x 211

Office 609.494.0700 x 211

Cell 609.206.5475

Email ATEpper@MaryAllen.com

Website <http://www.AtHomeLBI.com>

Each office is independently owned and operated



Philip E. Altland
Senior Vice President
Fine Homes Specialist



Prudential

Douglas Elliman Real Estate

25 W. 17th Street, New York, NY 10011

Dir Ln 212 727-8105 Fax 646 487-8766

paltland@elliman.com

www.philipaltland.com

An independently owned and operated member of Prudential Real Estate Affiliates, Inc.



tropics

325 Ninth Street, Beach Haven • 609-492-4608



fresh, fun clothes

Open Daily 10 AM

www.shopcoconuts.com

11100 Long Beach Blvd., Brent Beach • 909-415-5802

Plus Size Boutique

tropics too

Jewish Community Center of Long Beach Island

Primary Business Address
Your Address Line 2
Your Address Line 3

Phone: 555-555-5555
Fax: 555-555-5555
E-mail: someone@example.com



Your business tag line here.

DATES TO REMEMBER:

- ◆ Mah-jongg continues Wednesday Afternoons 12:30—4 PM at the Surf City Library; Contact Judy Smith
- ◆ Last Day Passover Services—Yiskor: Tuesday, April 26th 9:30 AM
- ◆ Friday, April 29, 2011 Interfaith Service 7:30 PM St. Thomas Church
- ◆ Saturday, April 30th- Holocaust Remembrance Program at 2:00 PM at the Library in Surf City.
- ◆ Winter Mah-jongg: Sunday, May 15th 9:30 AM—contact Karen Schwing
- ◆ Breakfast Club: Sunday, May 22nd 10:00 AM—Location TBA
- ◆ Trip to the National Museum of American Jewish History in Philadelphia for Thursday, May 26 at 11:00 AM. Call Judy Smith 492-9603
- ◆ Friday, May 27, 2011 Friday evening services will now begin at 8 PM
- ◆ Saturday, May 28, 2011: Shabbat morning services begin weekly at 9:30 AM
- ◆ Winter Mah-jongg: Sunday, June 5th 9:30 AM—contact Karen Schwing
- ◆ Shavuot Services: Wed. June 8th 9:30 AM
- ◆ Shavuot Services and Yiskor: Thursday, June 9th 9:30 AM